

New QEII Hospital

Welwyn Garden City, UK

The New QEII Hospital is amongst the first of a new generation of NHS local hospitals integrating primary, acute and social care services to serve the local population.

This new building and the reorganisation of the local health system has provided the opportunity to deliver new models of care by integrating primary, acute and social care services to this community. This project exemplifies the current reforms in the NHS and the Five Year Forward View's emphasis on integration and efficiency.

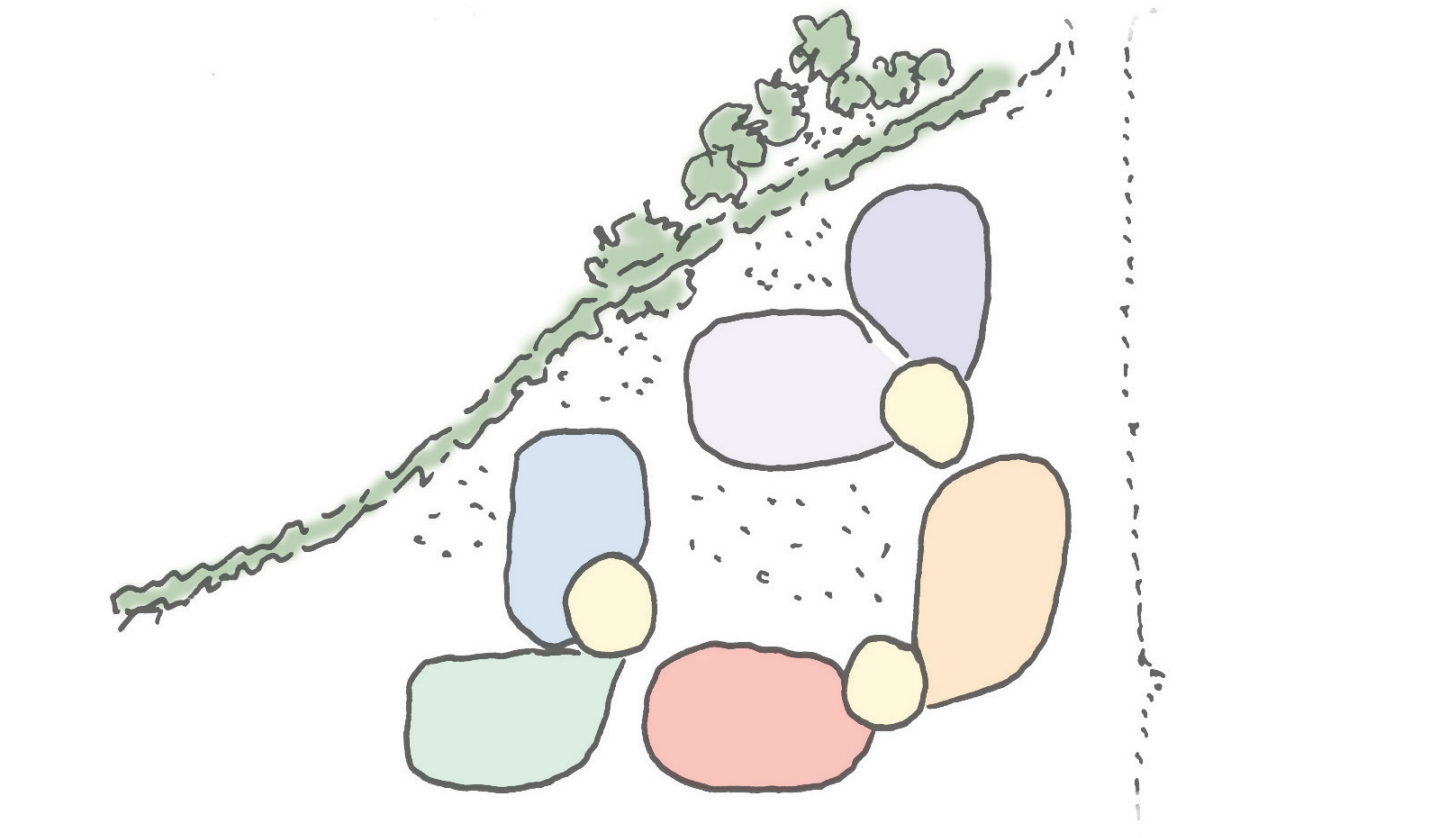
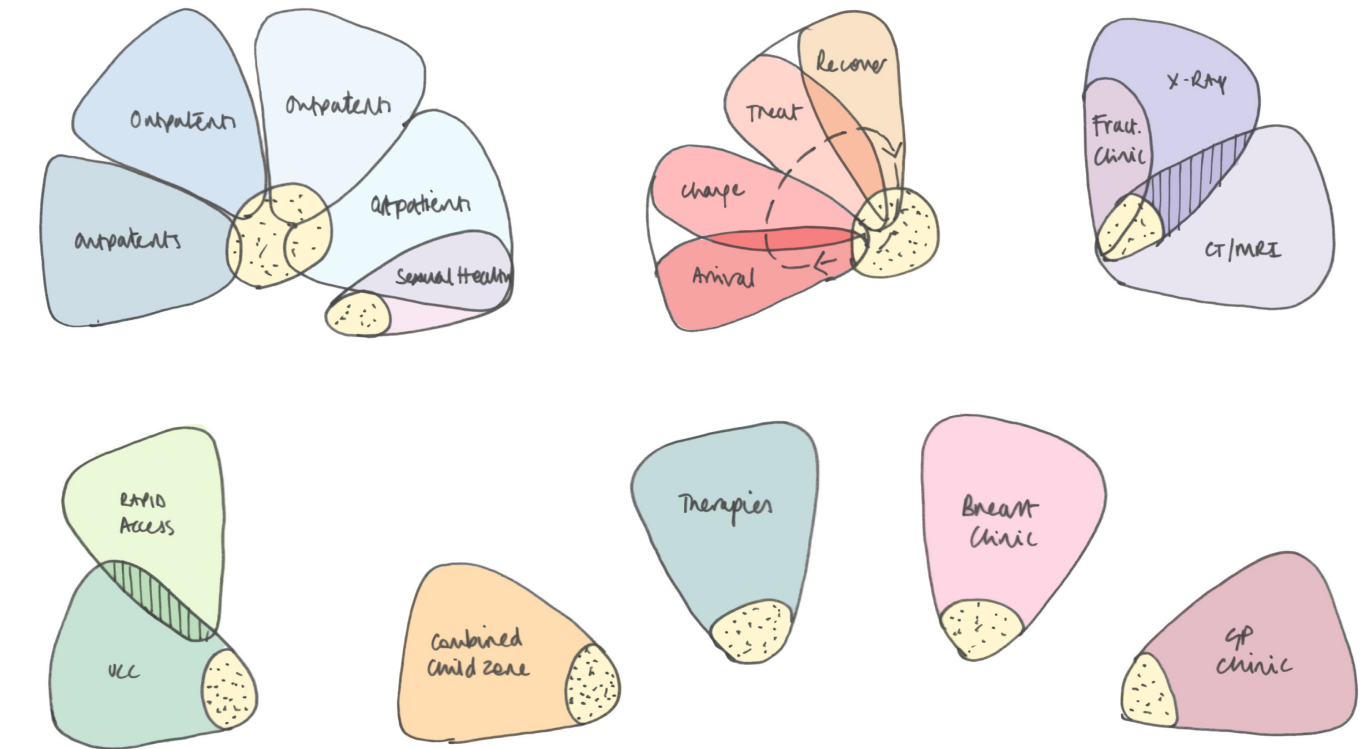
The design incorporates clinical layouts and generic spaces to enable flexibility of use on a day to day basis and adaptability to future service changes. Currently the New QEII accommodates a 24/7 Urgent Care Centre, a Diagnostic Imaging department with MRI, CT, X-Ray, Ultrasound, a large Outpatients, Ambulatory Care, Medical Day Treatment, Integrated Children's services, Therapies, Breast Clinic and an Endoscopy suite. There are also bookable community spaces.

With so many functions, it's a challenge to create coherence and legibility for patients together with good adjacencies and short travel distances for staff. The layout consists of three interlocking 'L' shapes placed against the mature hedge that borders the site, creating a central courtyard and a series of triangular gardens. The interlacing of external and internal space creates clinically efficient floor plates that can be generally naturally ventilated.

The dissolution of inside and outside, particularly apt in the setting of a Garden City, brings therapeutic benefits of nature to all parts of the building. The circulation and waiting spaces are adjacent to the accessible central garden, which is also the first thing you see on arriving at the triple height lobby of the main entrance. Nearby are a café, a pharmacy, and bookable community spaces.

An exemplar of low energy, sustainable design, achieving BREEAM Excellent, and is particularly designed around the wellbeing of patients.

The New QEII is located on the existing hospital site and was developed as part of an overall masterplan to deliver a sustainable development that supports the new hospital and future uses of the site. The building design integrates the work of several artists, both practical and decorative, to add interest and human scale.



The building is formed of three 'L' shaped wings defining a central courtyard, around which the main public circulation is arranged



Outpatient reception in triple height entrance zone



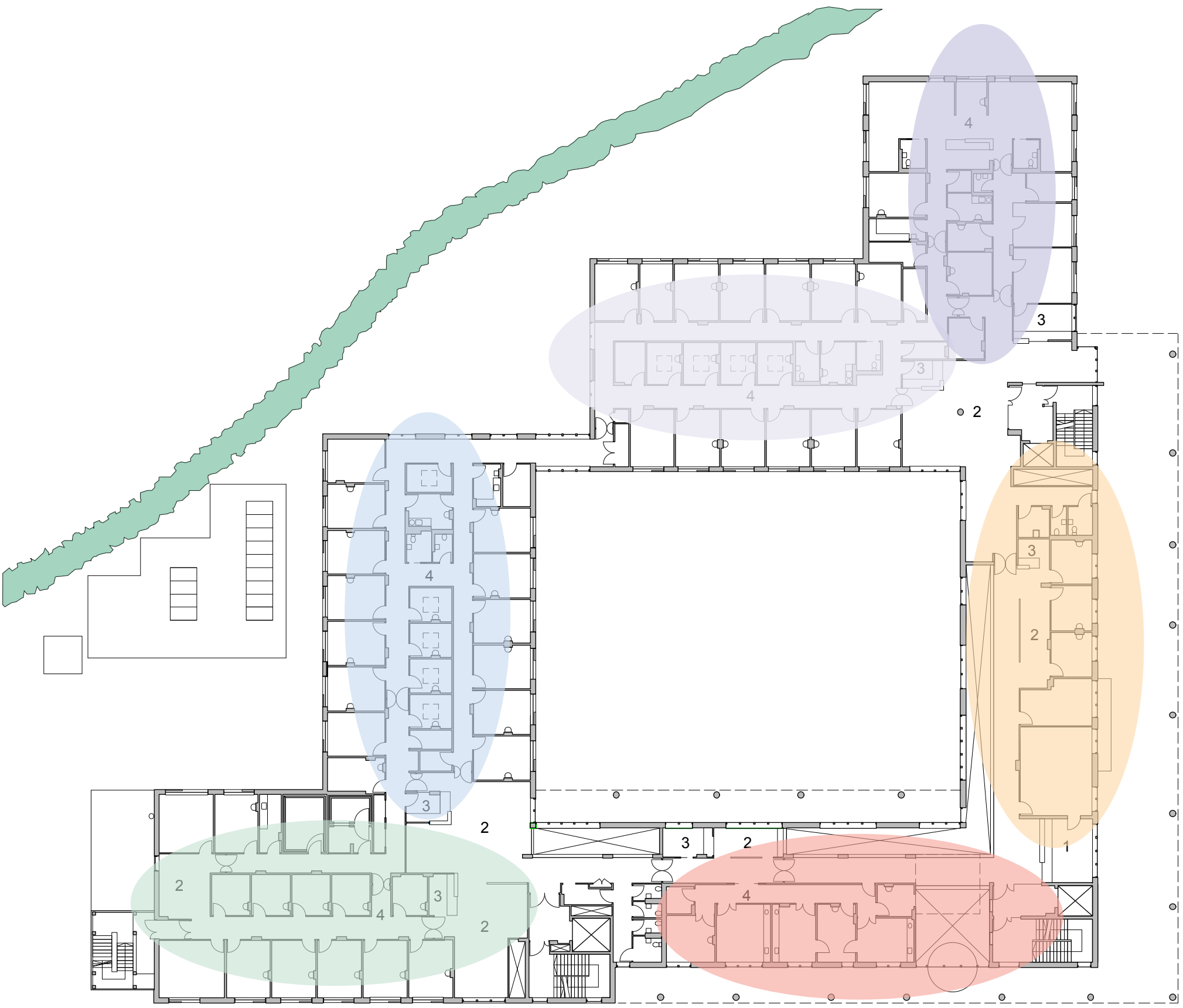
Double height circulation around courtyard



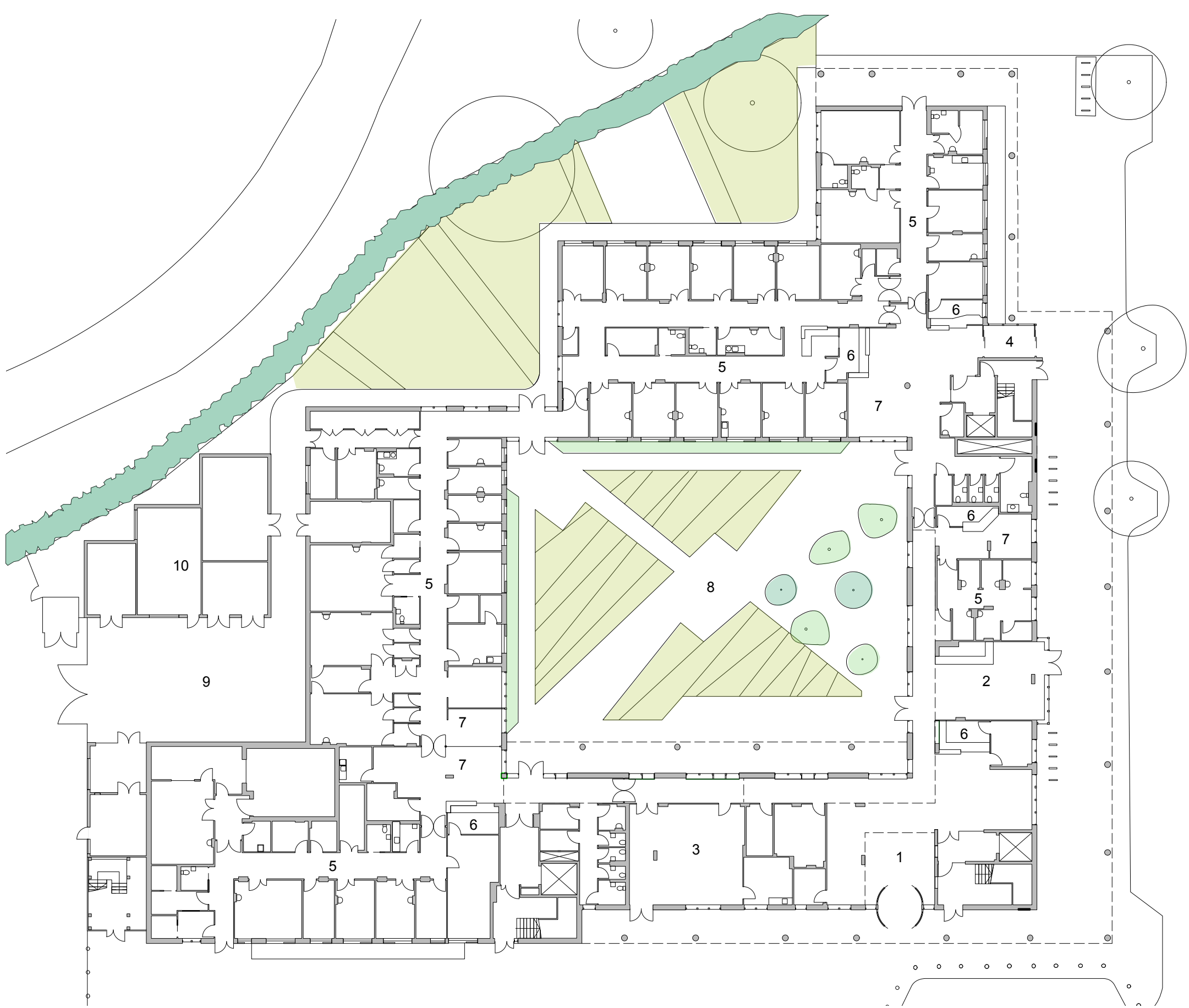
Detail of materials & window design



Urgent Care Centre entrance & colonnade



Key | First floor
1. Main first floor reception
2. Waiting area
3. Sub-receptions
4. Clinical department



Key | Ground floor
1. Main entrance
2. Café
3. Pharmacy
4. Urgent Care Centre entrance
5. Clinical department
6. Receptions
7. Waiting area
8. Courtyard
9. Service yard
10. Plant annex



Section through courtyard & gardens



Central courtyard garden

"It was obvious that the new facility has been taken on by the staff and occupied in a way that indicates they are proud of this building. The skill of the architect in incorporating the technical requirements in a way that makes the building as stress free as possible is a fabulous achievement."

RIBA 2016