

Farrow



Living Bridges

Tye S. Farrow

B.Arch., M.Arch.UD, FRAIC, OAA,
MAIBC, Int'l AIA, LEED



Reimagining infrastructure

single-use bridges
as high performing
social & cultural
urban health generators



Community Building

Spending directed toward the challenges of mixed-use & affordable housing

Side-effect

Successful cities:
the quality of life is become
unaffordable to those that
are essential to the
cities success

Governments are struggling to
respond as there are few immediate
land options



Infrastructure Spending

Governments are committing billions toward the building & repair of Infrastructure yet centrally located properties for use as affordable housing in our cities are hard to come by

Squandered Places?

single use liabilities?
connectors or dividers?

Could we literally bridge
our weak urban links
between neighbourhoods
to forge stronger
community connections?

Mixed-use

Multi-use, multi-functional buildings & neighbourhoods has been a core ingredient to creating successful cities.



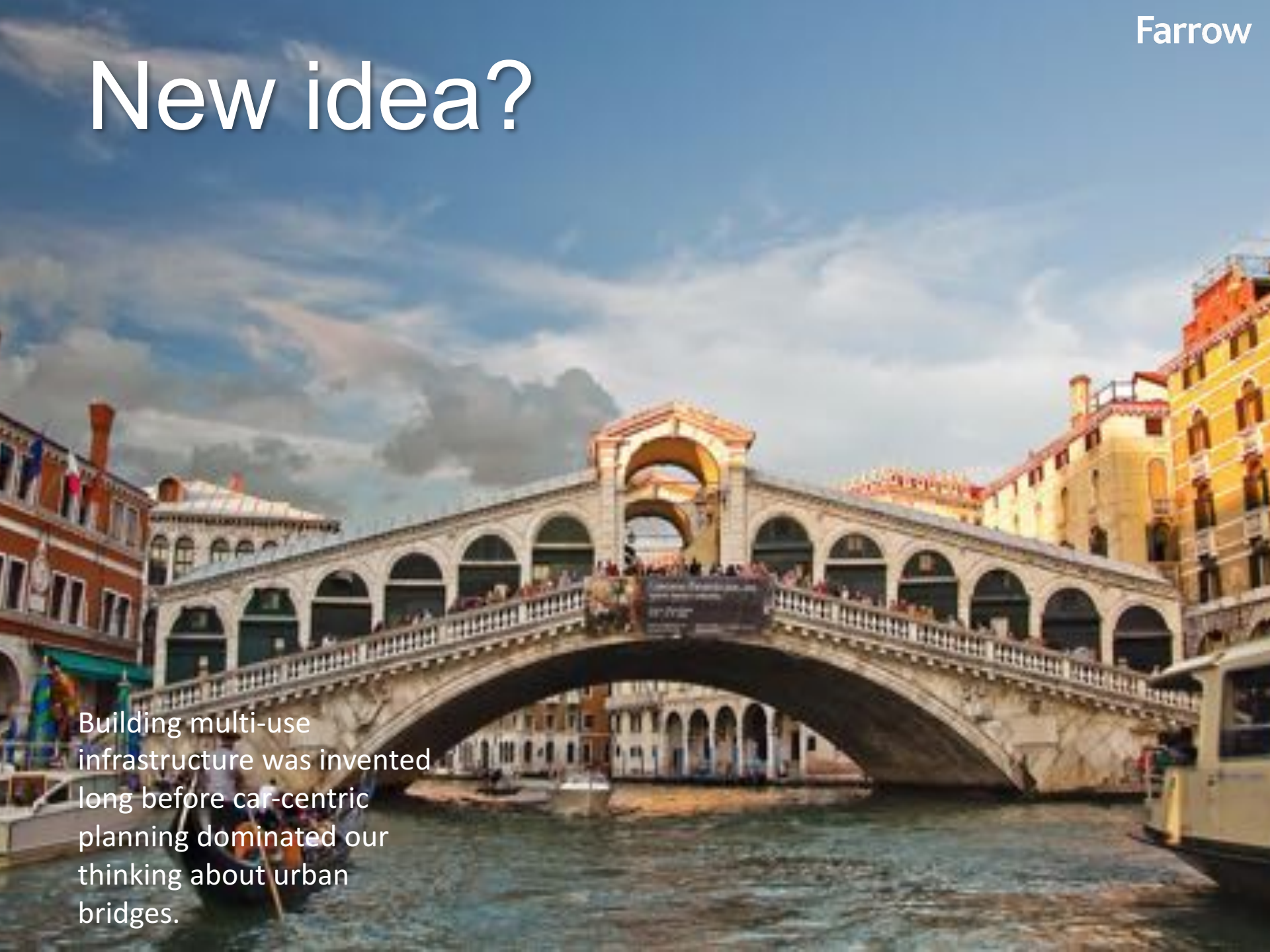
Mixed-use?

...yet the create of
urban infrastructure is
all single use



New idea?

Building multi-use infrastructure was invented long before car-centric planning dominated our thinking about urban bridges.





Infrastructure as a
revenue generating asset,
rather than an expense



Pulteney Bridge, Bath



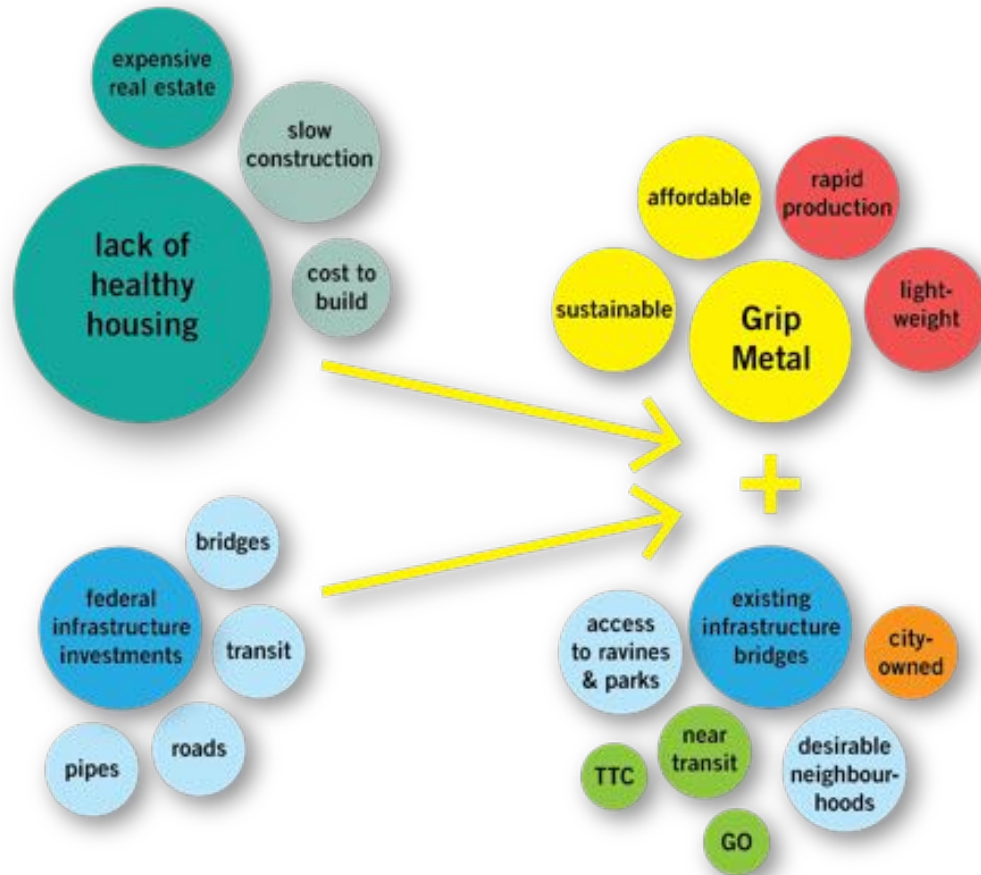
London Bridge, London



Linking Silos







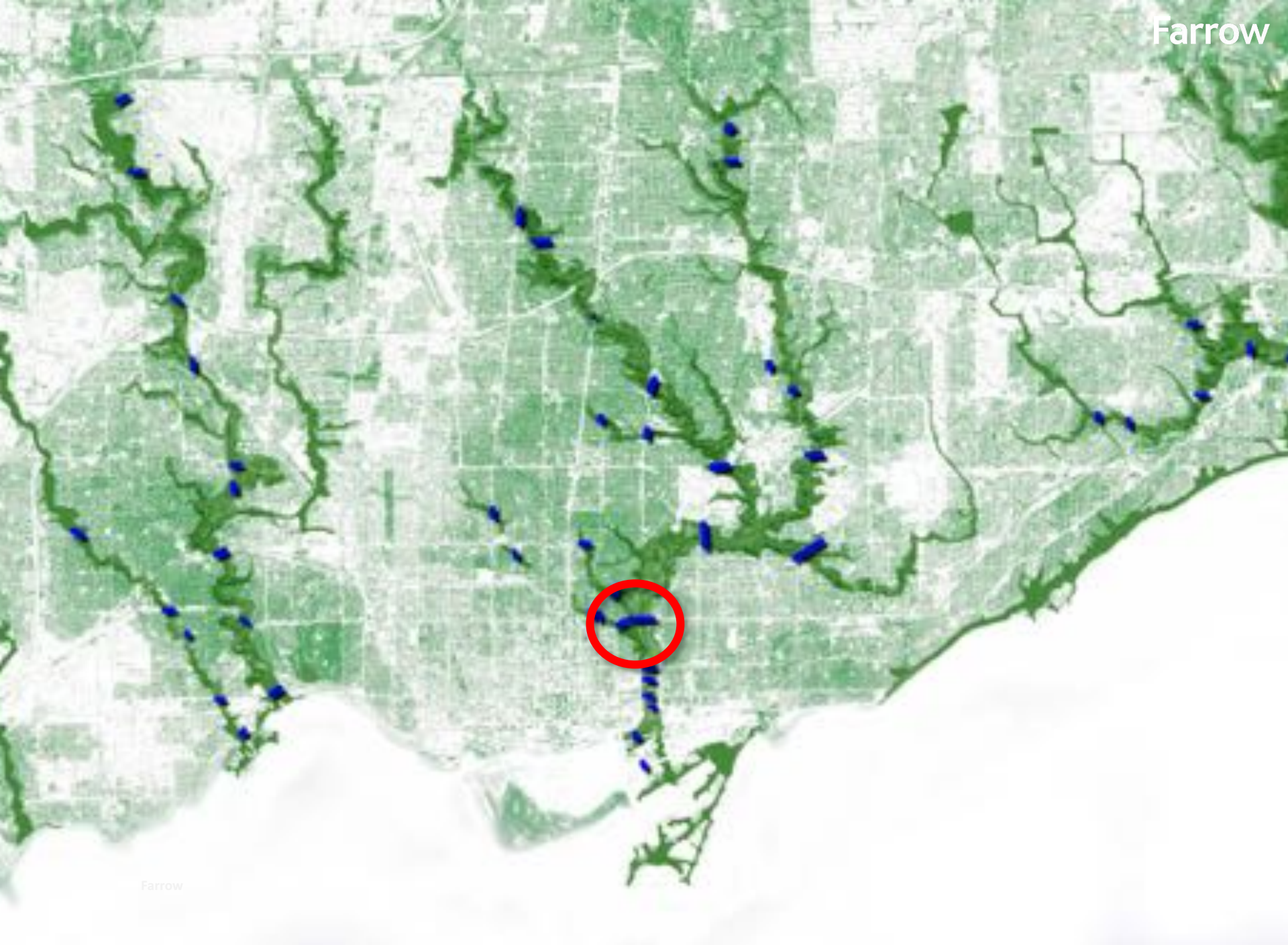




Farrow

Lake Ontario









**The Prince Edward Viaduct designed
in 1912 by Edmund Burk**



Bloor Street
Viaduct

Bloor Street

The Danforth







While it provided
spectacular views
of the valley and city
originally

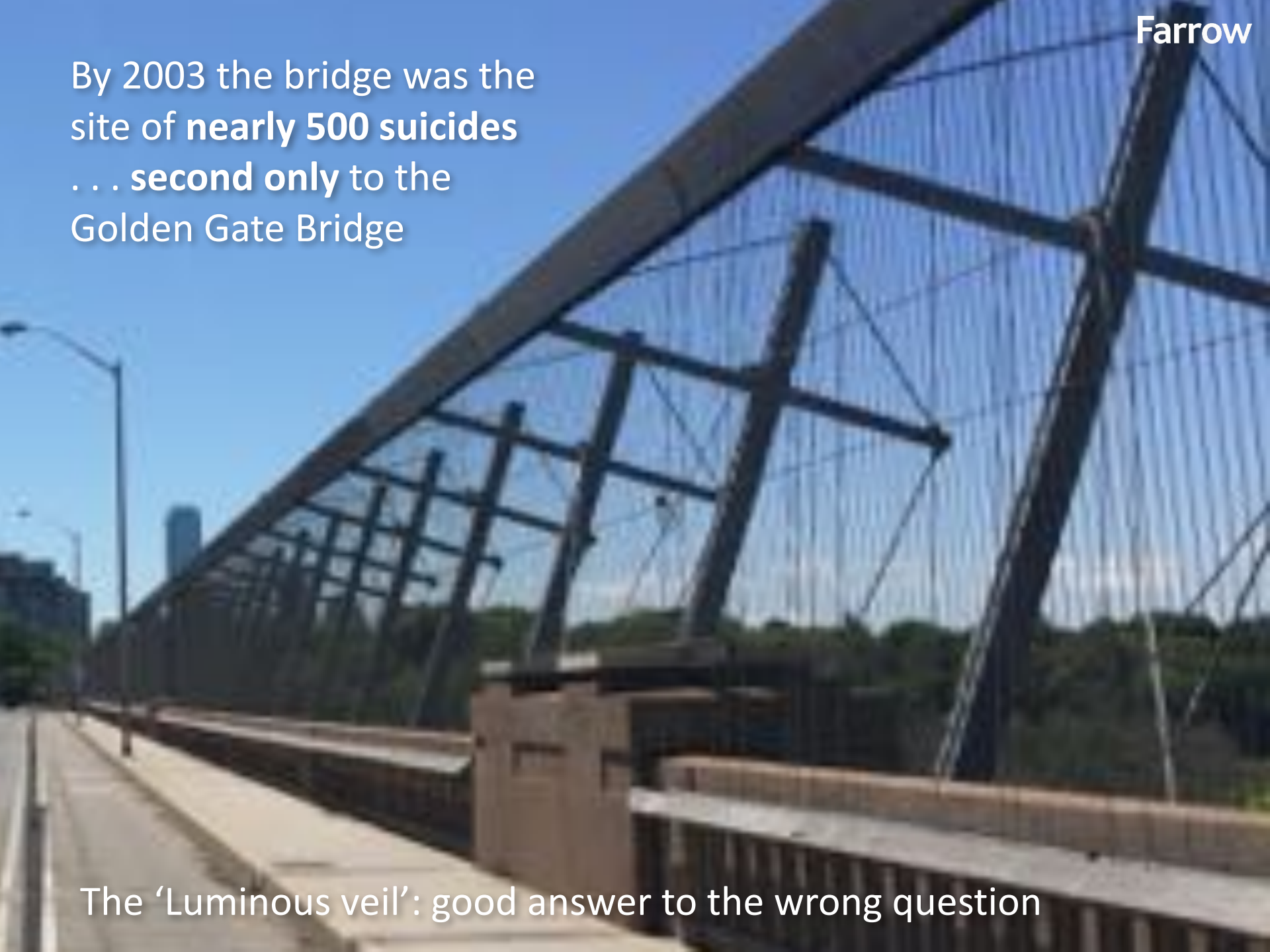


...now it is a 500 metre
**traffic-dominated
wasteland**

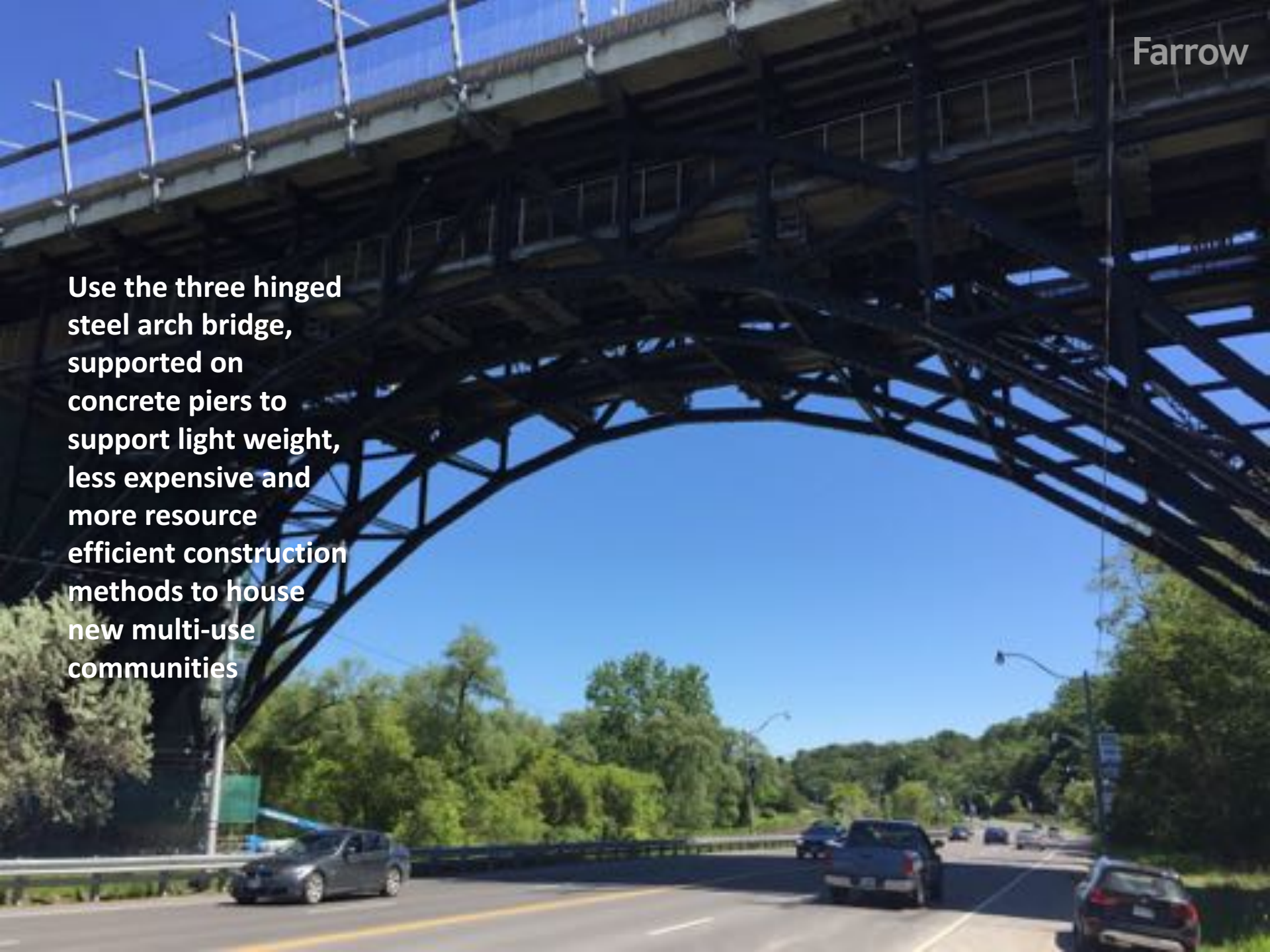


By 2003 the bridge was the
site of **nearly 500 suicides**
... **second only** to the
Golden Gate Bridge

The 'Luminous veil': good answer to the wrong question



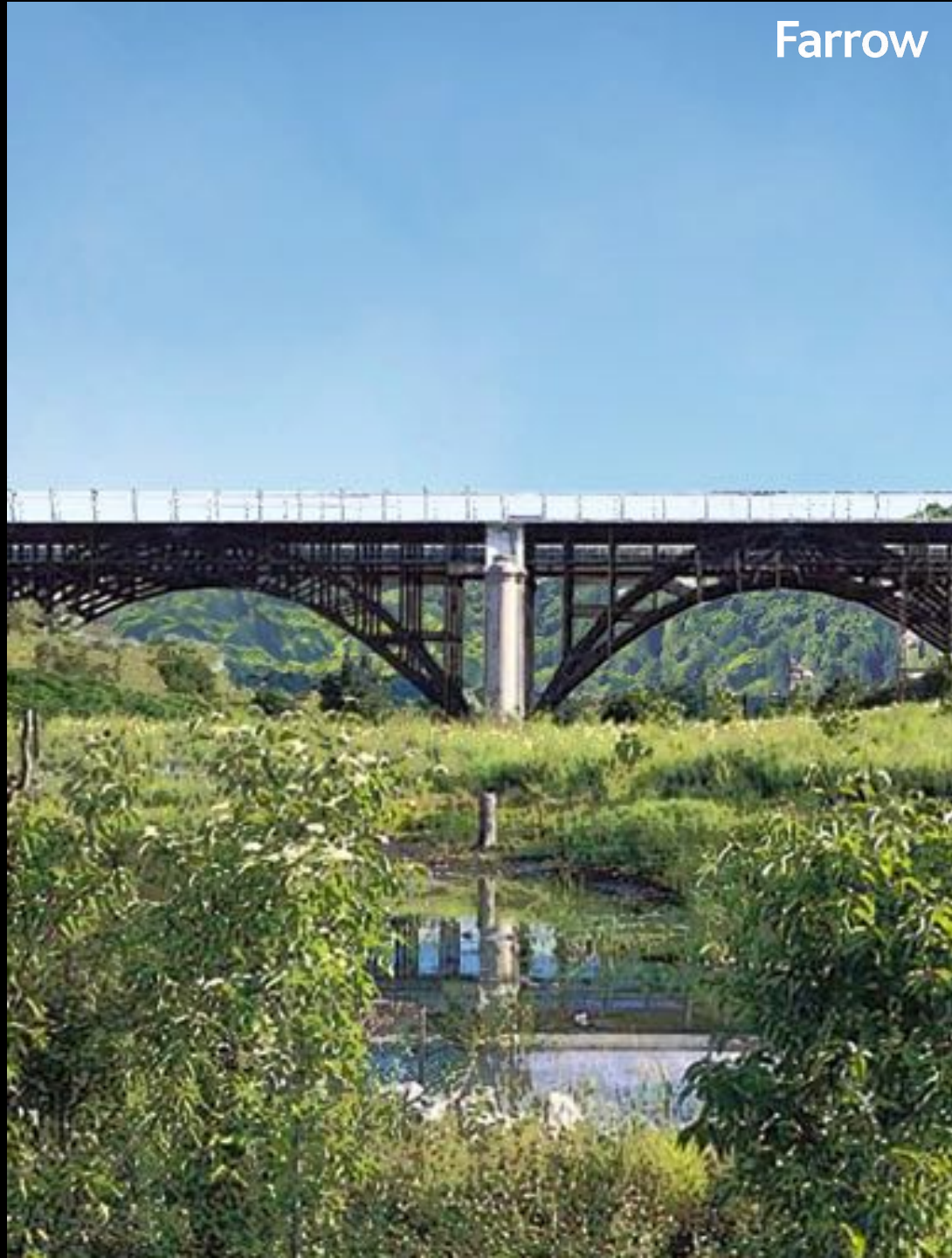
Use the three hinged steel arch bridge, supported on concrete piers to support light weight, less expensive and more resource efficient construction methods to house new multi-use communities



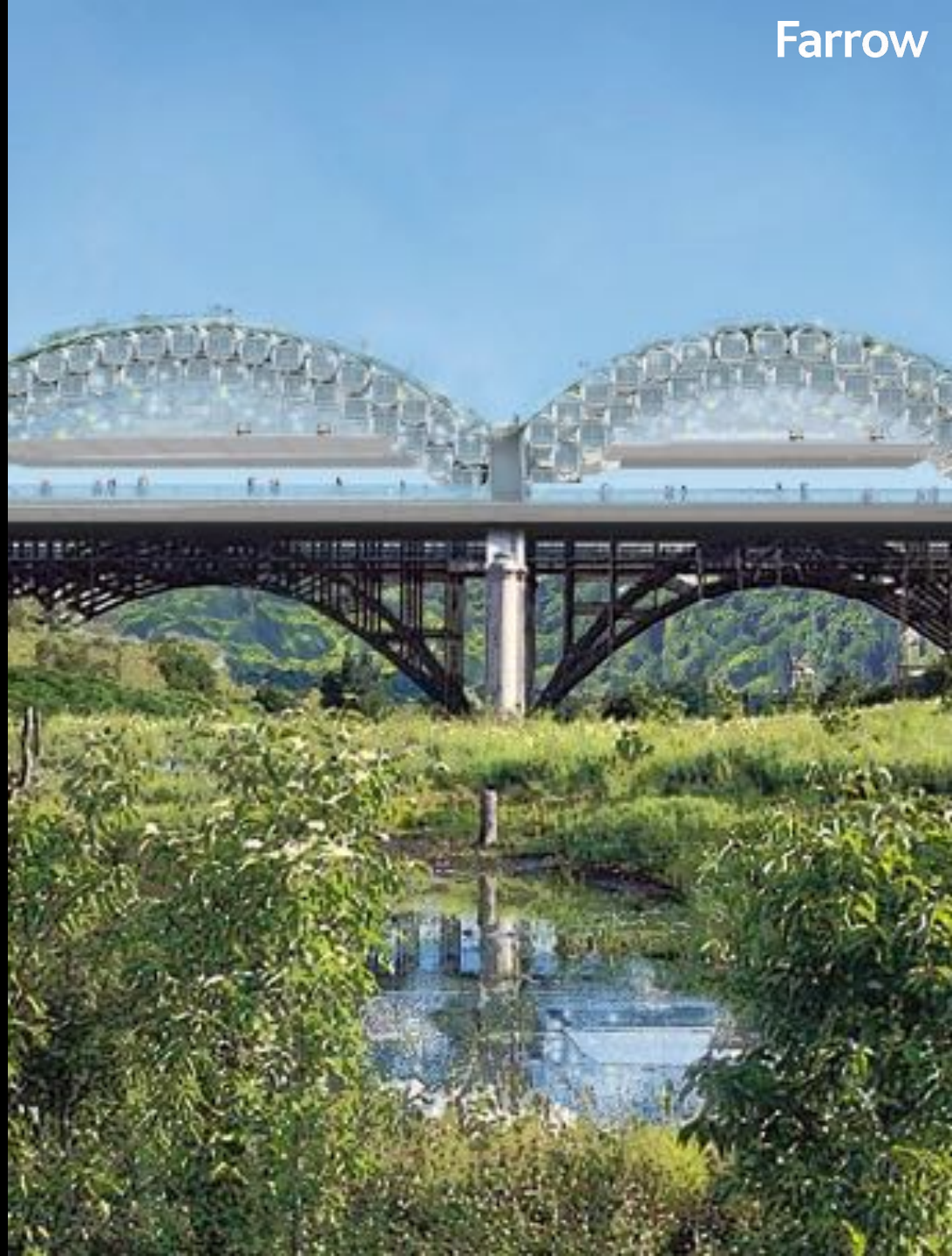




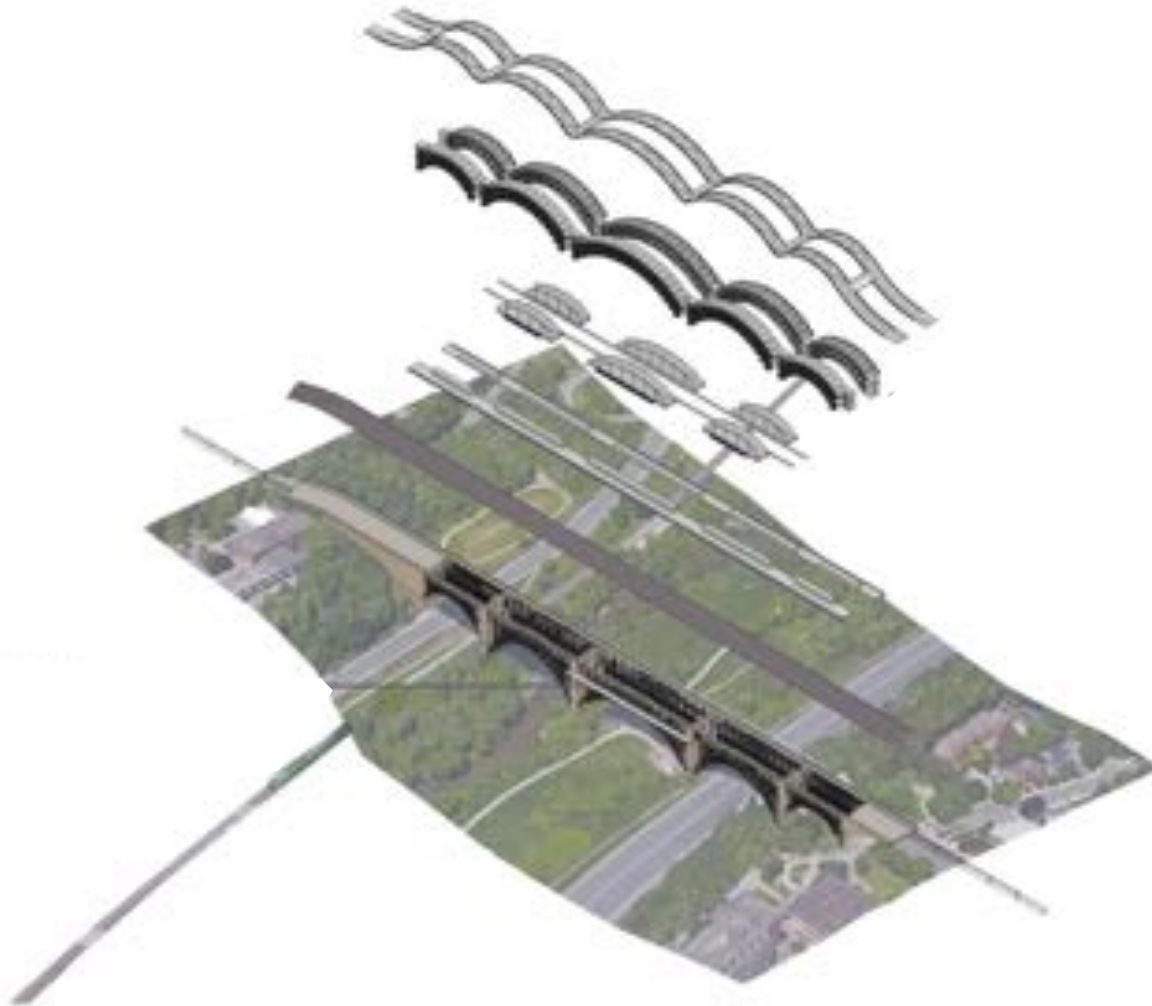
**Use the 100 year old
bridge foundation to
support new
economic life
while creating
continuous, vibrant,
connected
neighbourhoods**



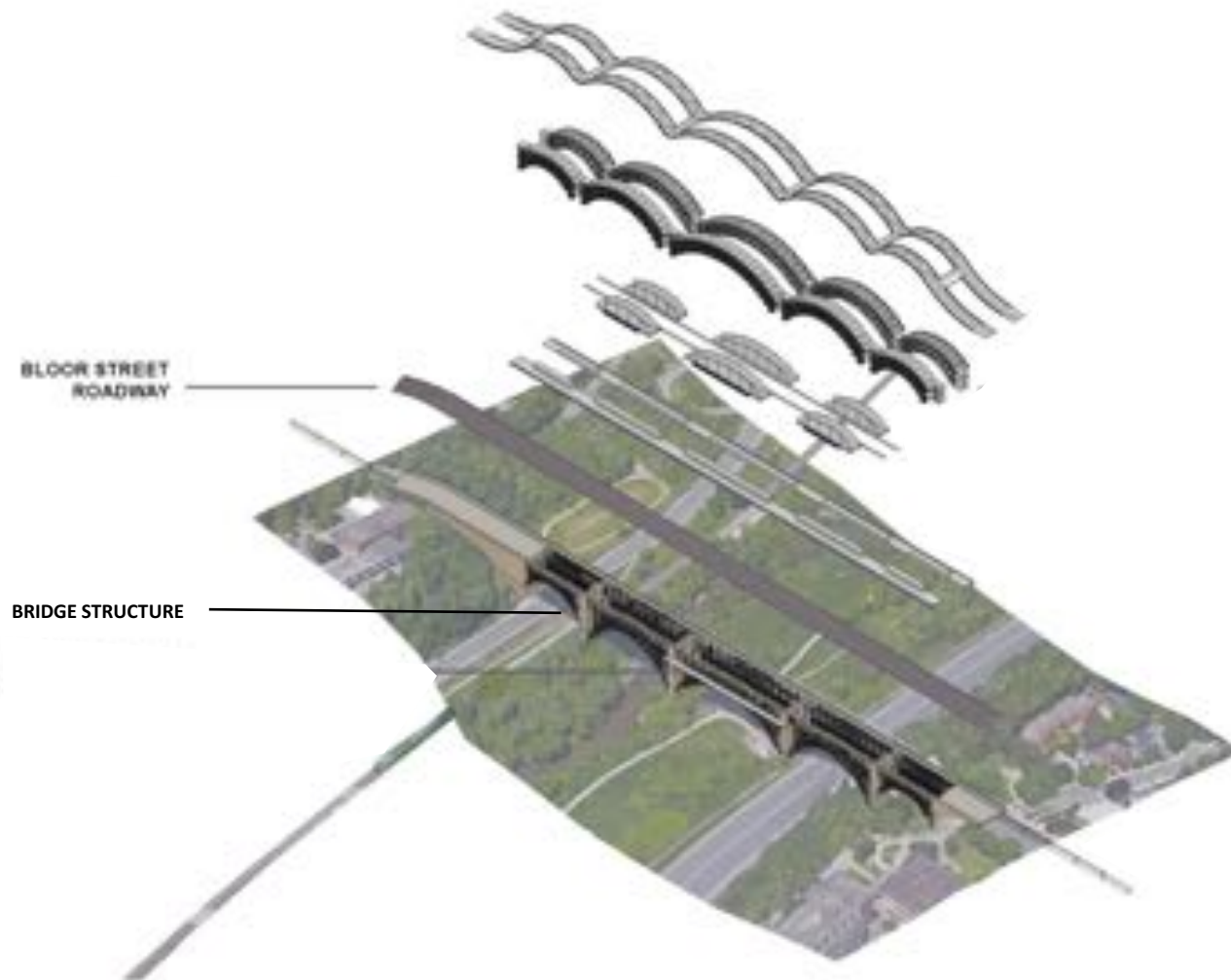
**Use the 100 year old
bridge foundation to
support new
economic life
while creating
continuous, vibrant,
connected
neighbourhoods**



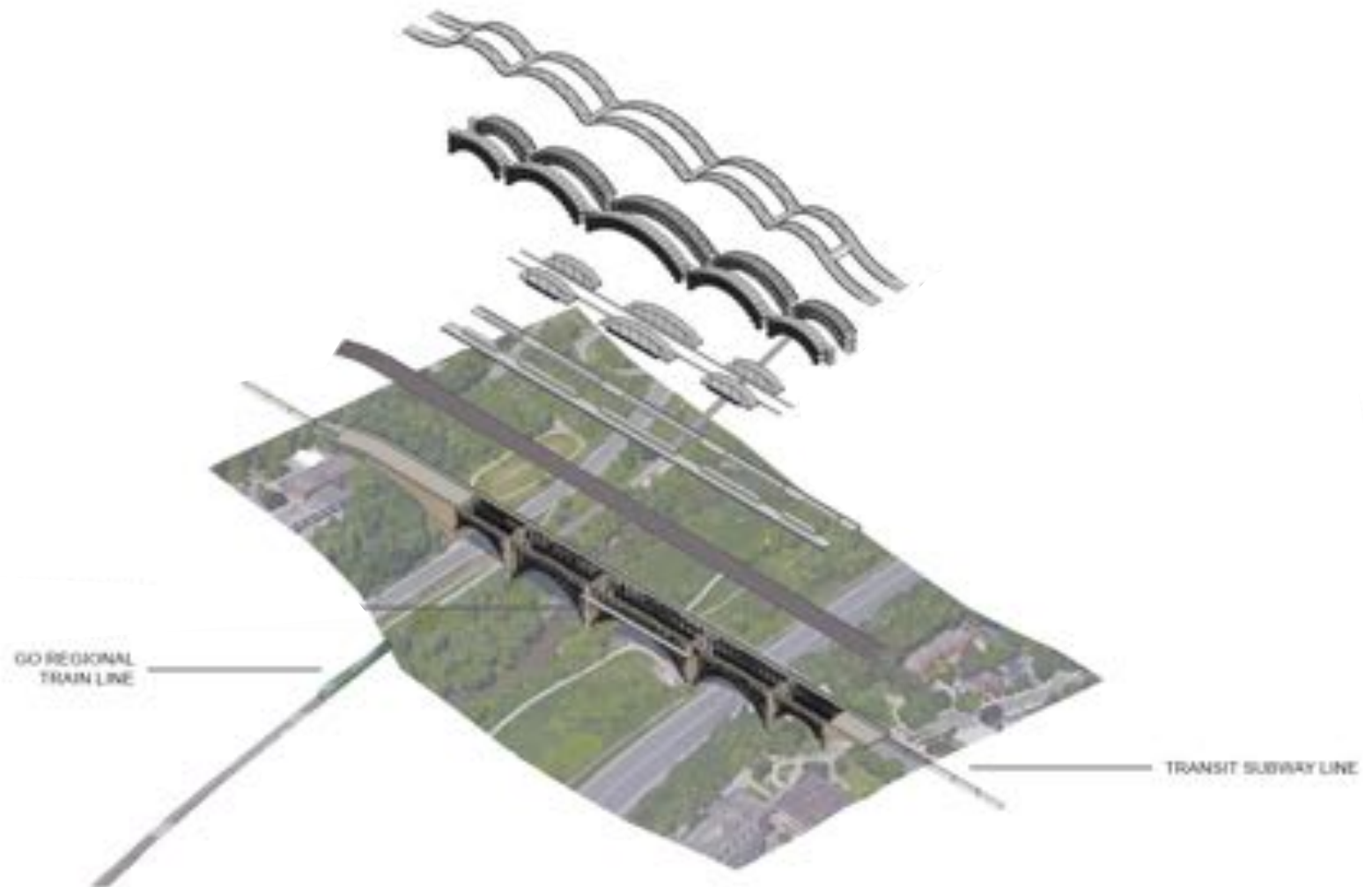
Components



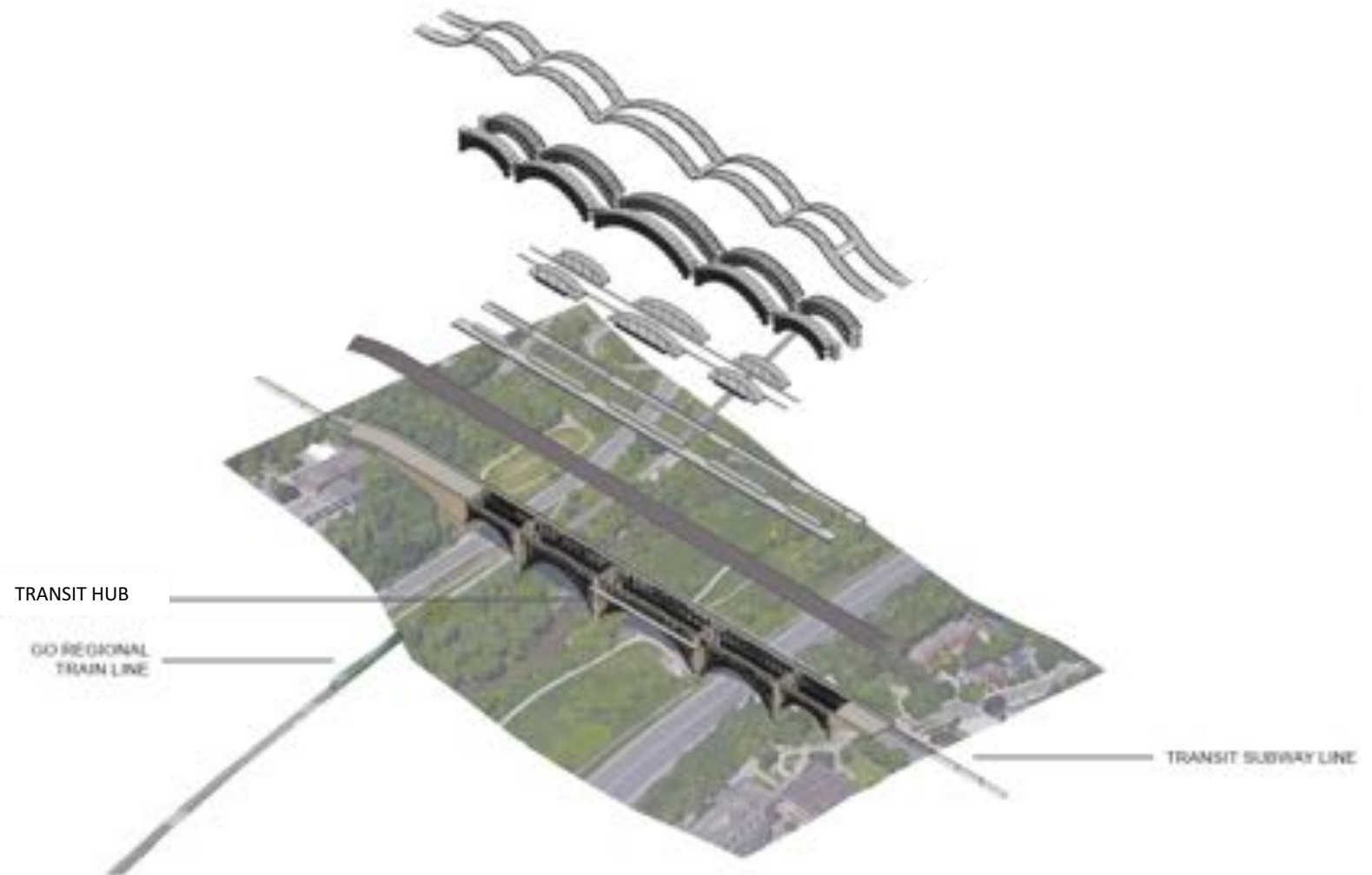
Exiting bridge and roadway



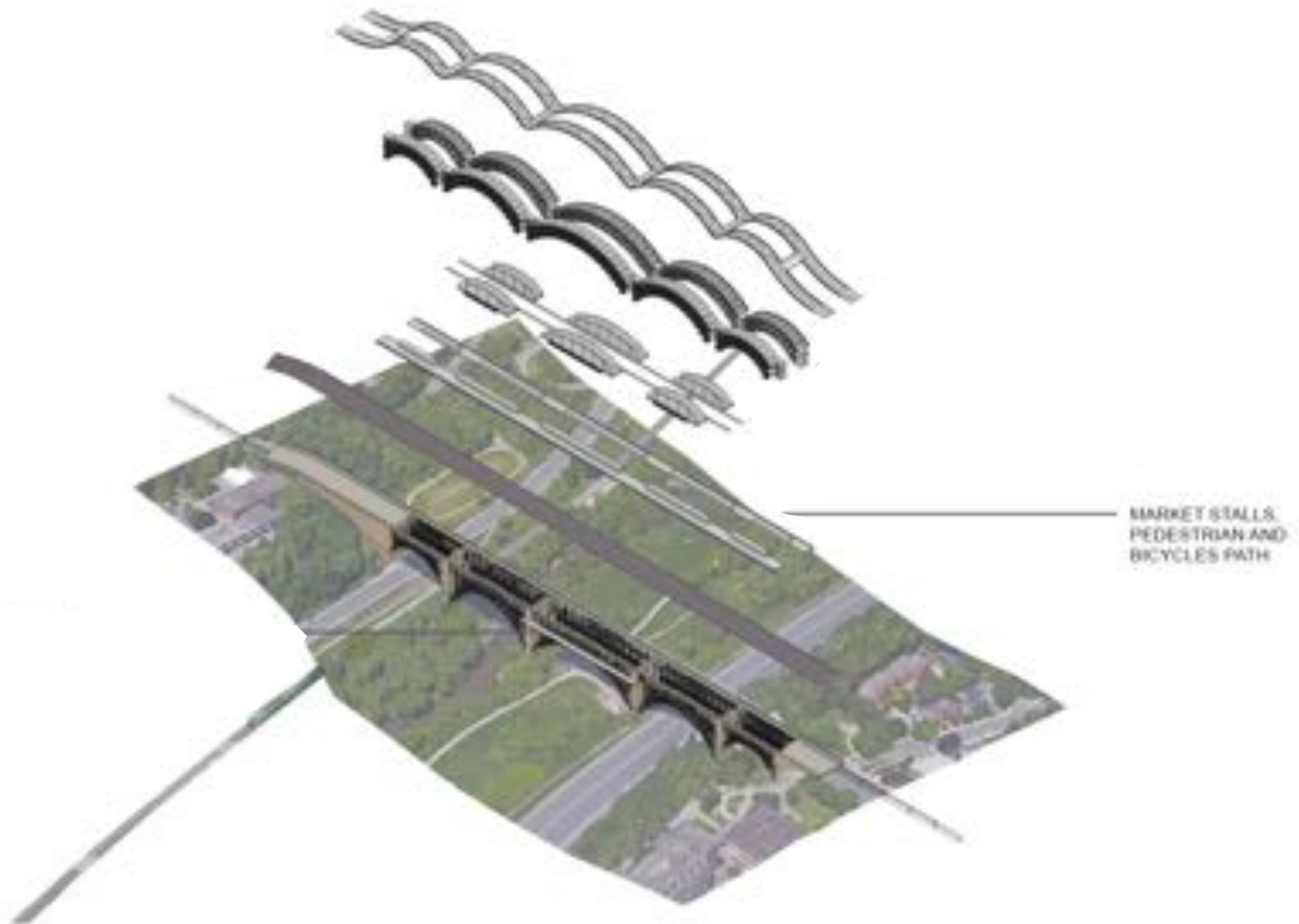
Existing regional train & subway lines



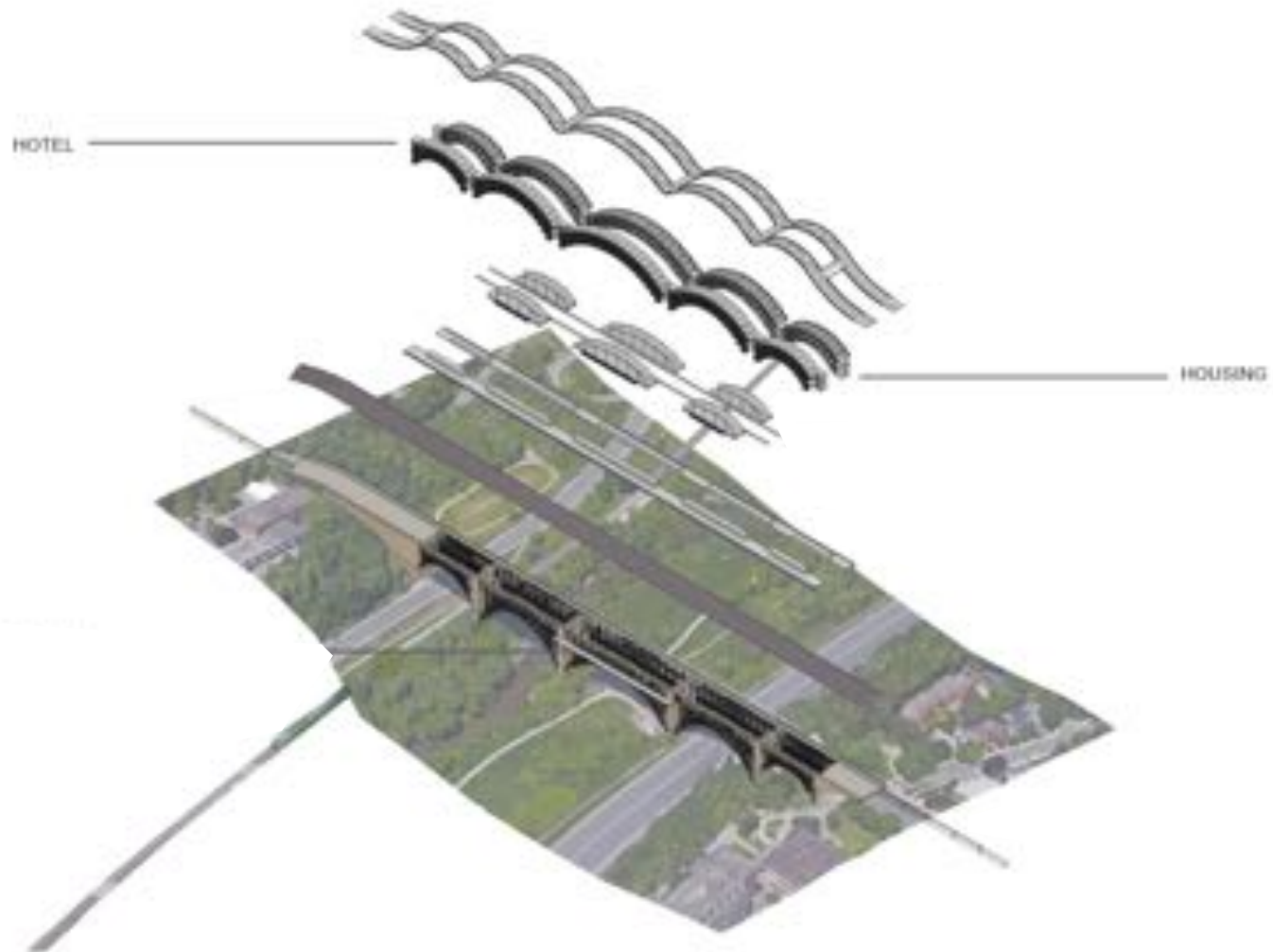
Transit Hub



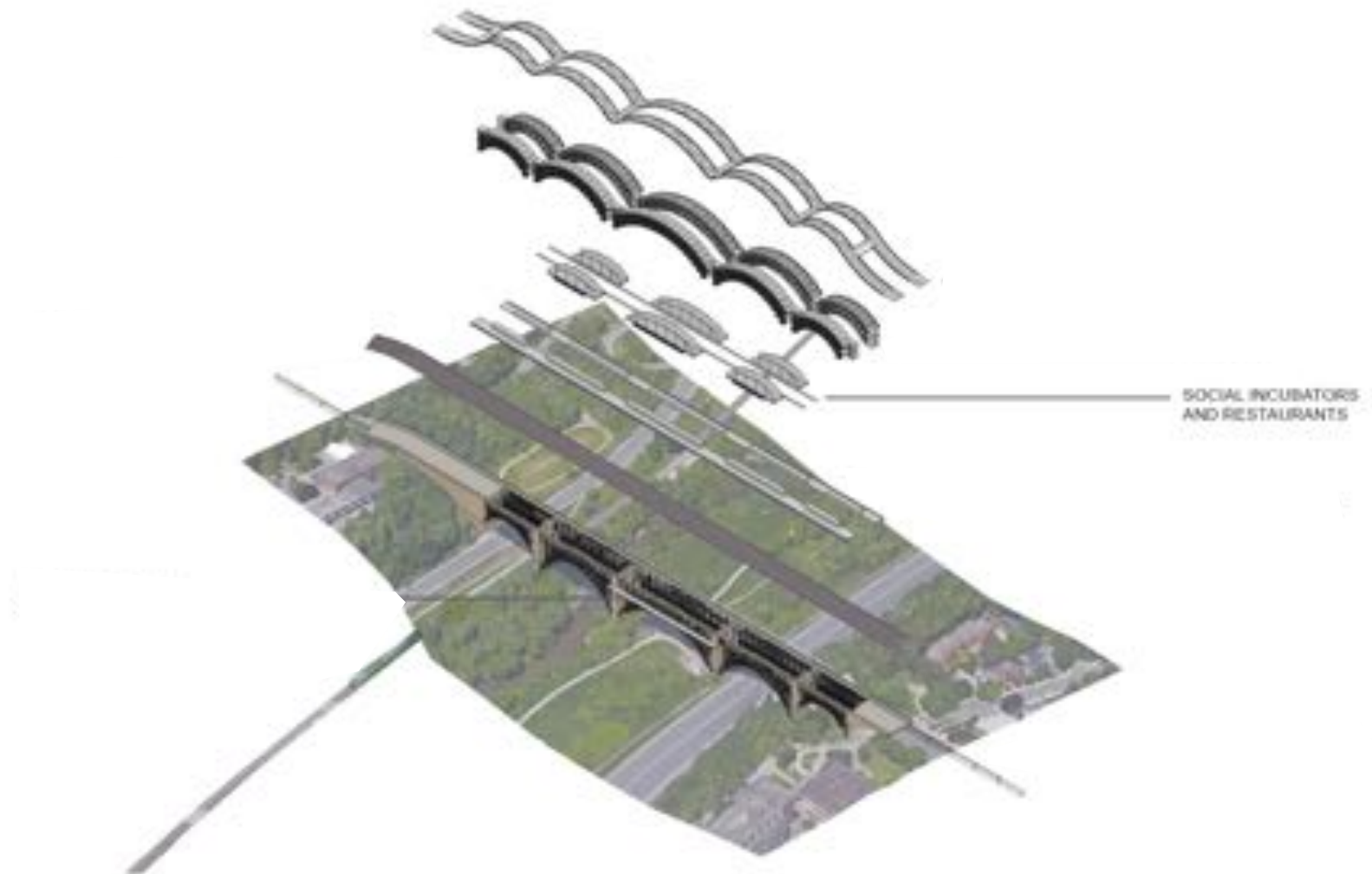
Market retail



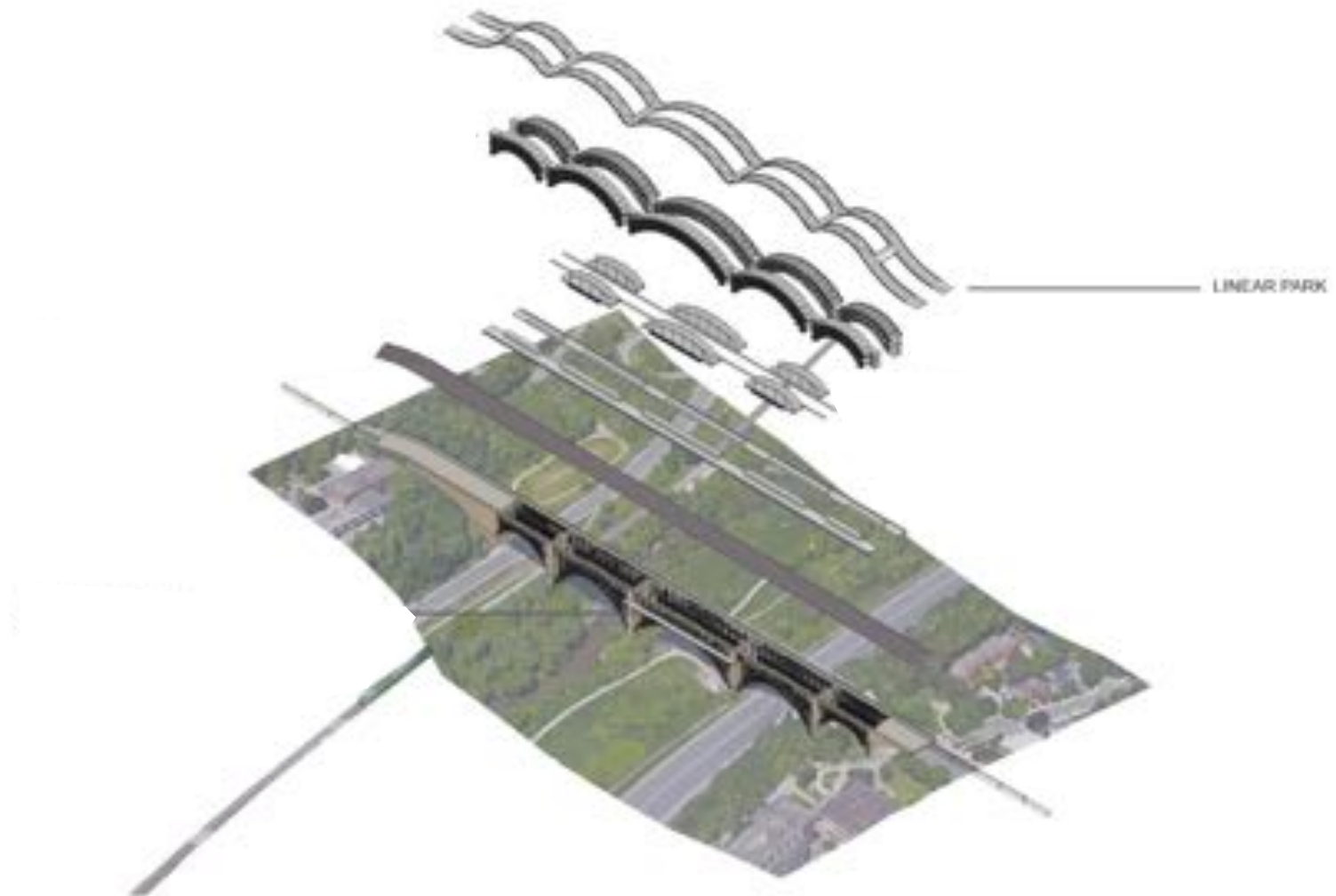
Housing & hotel

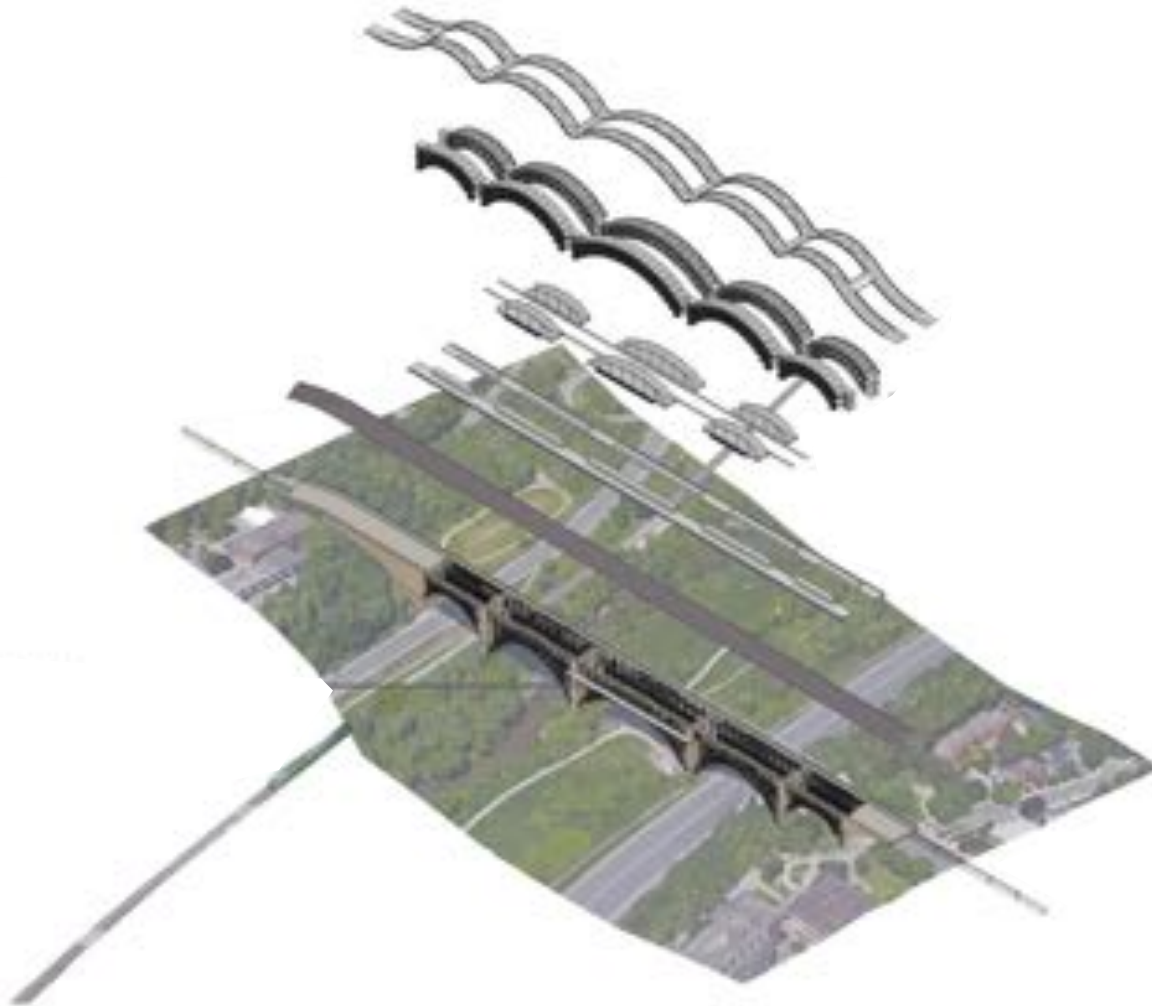


Incubators & restaurants



Linear park



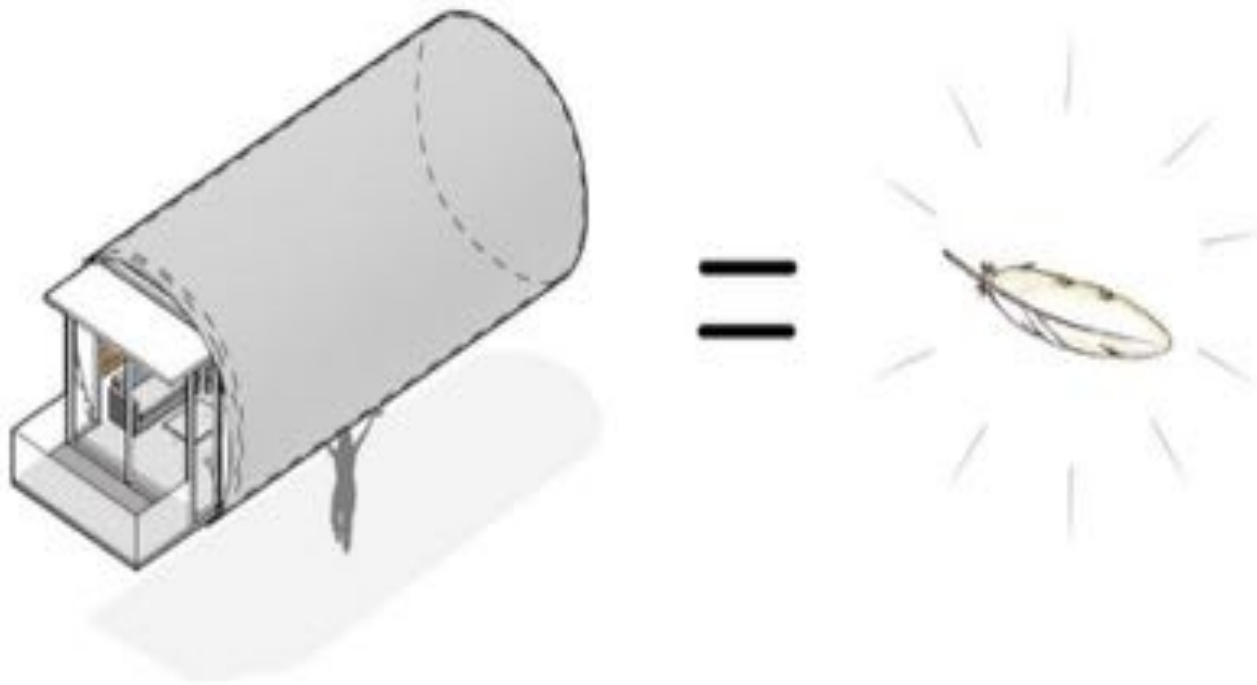


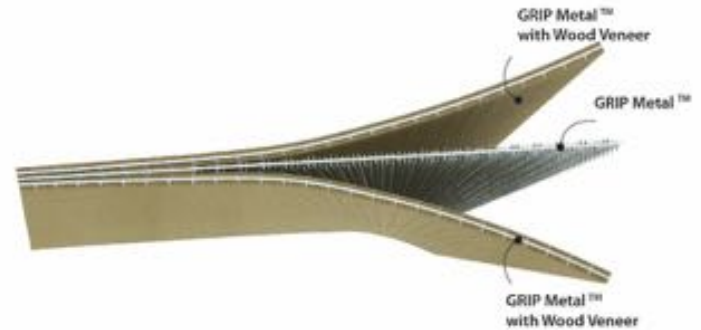




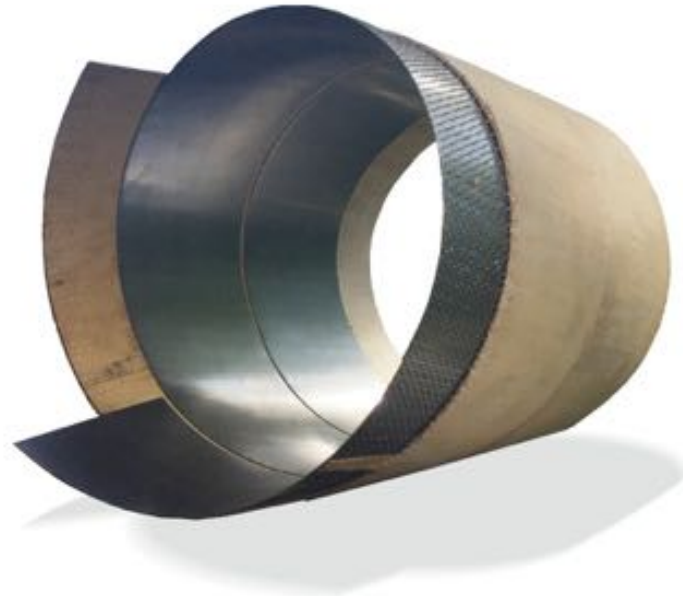
Housing

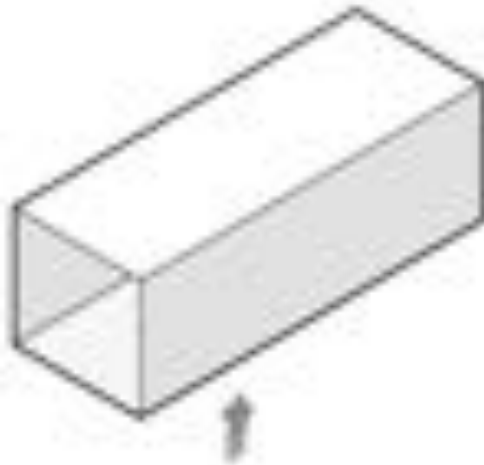


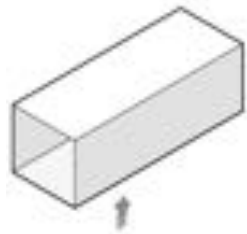




Grip Metal, a micro-hook bonding system from the auto industry, combined with thin polymer infused wood sheets creates a high strength to weight structural veneer enabling the creation of affordable, rapidly implemented solutions for structures that can be built on existing infrastructures.







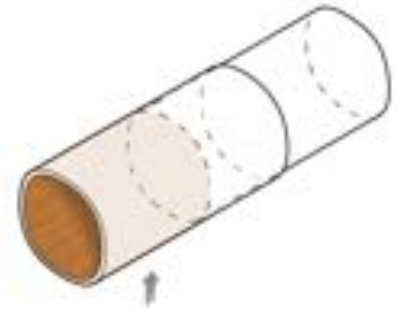
TYPICAL UNIT



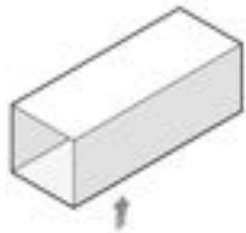
ROLLING TUBE



FINISHED TUBE



INSULATION INSERTED



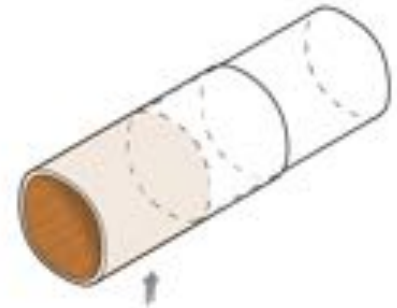
TYPICAL UNIT



ROLLING TUBE



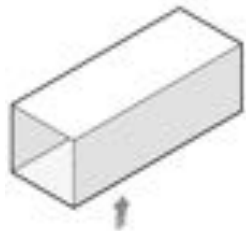
FINISHED TUBE



INSULATION INSERTED



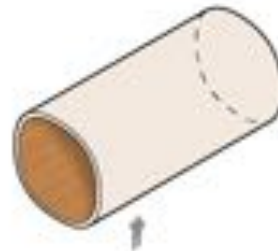
INTERIOR FINISHED



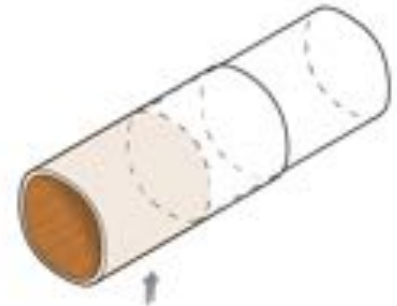
TYPICAL UNIT



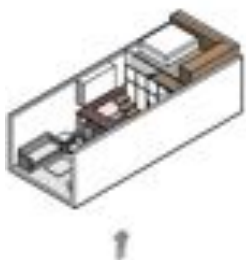
ROLLING TUBE



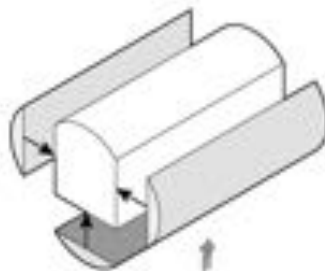
FINISHED TUBE



INSULATION INSERTED



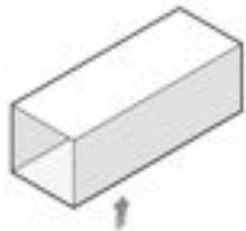
INTERIOR FINISHER



ADDED STORAGE



STORAGE & FINISHER



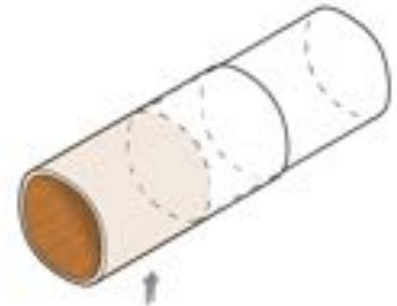
TYPICAL UNIT



ROLLING TUBE



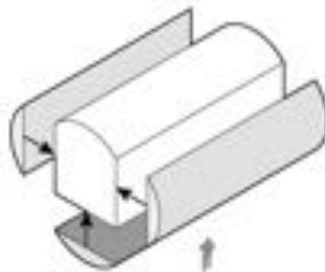
FINISHED TUBE



INSULATION INSERTED



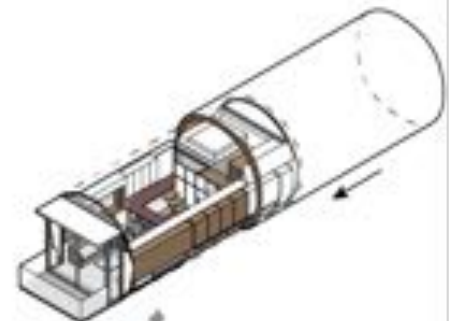
INTERIOR FINISHER



ADDED STORAGE



STORAGE & FINISHER

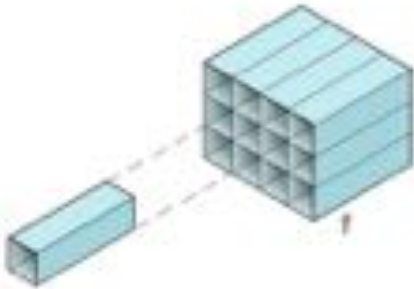


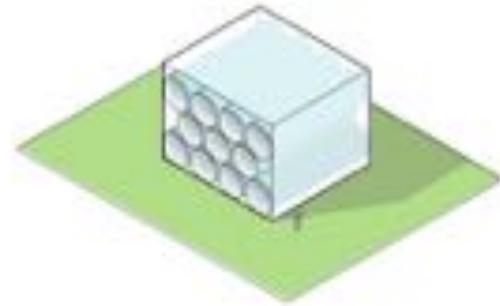
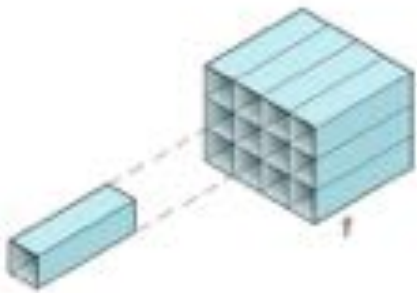
INTERIOR INSERTION

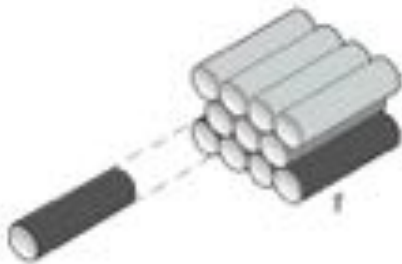
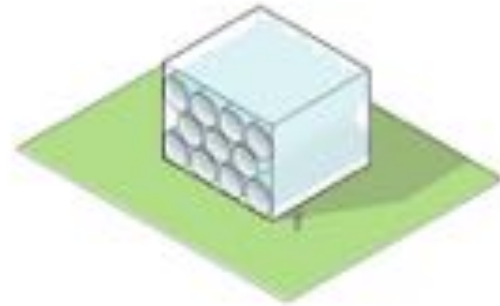
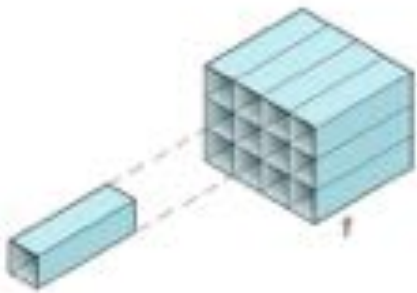


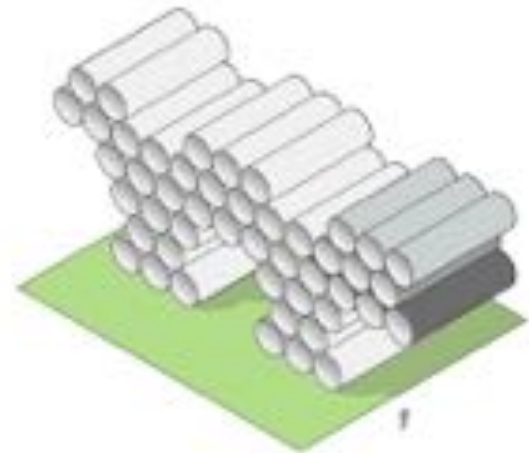
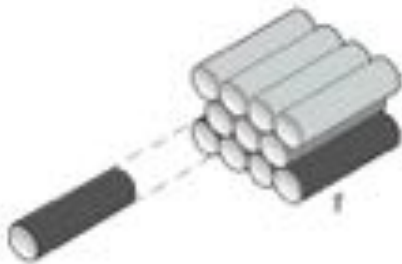
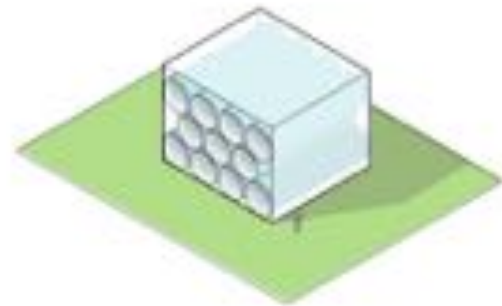
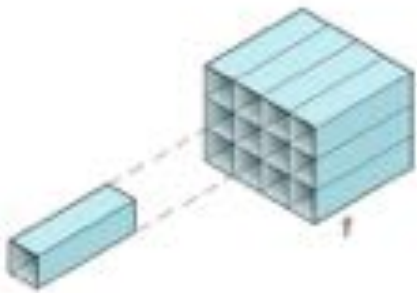




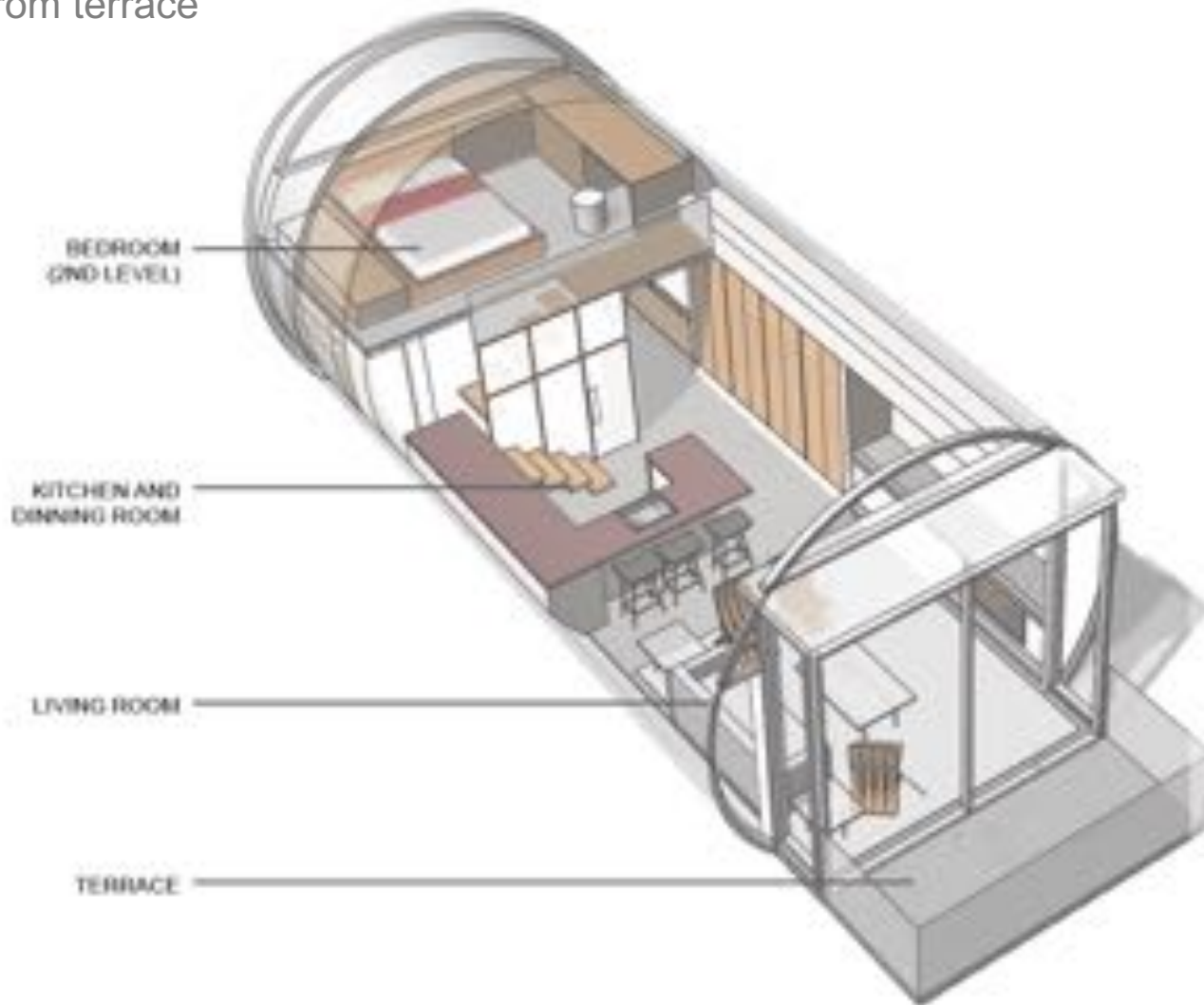




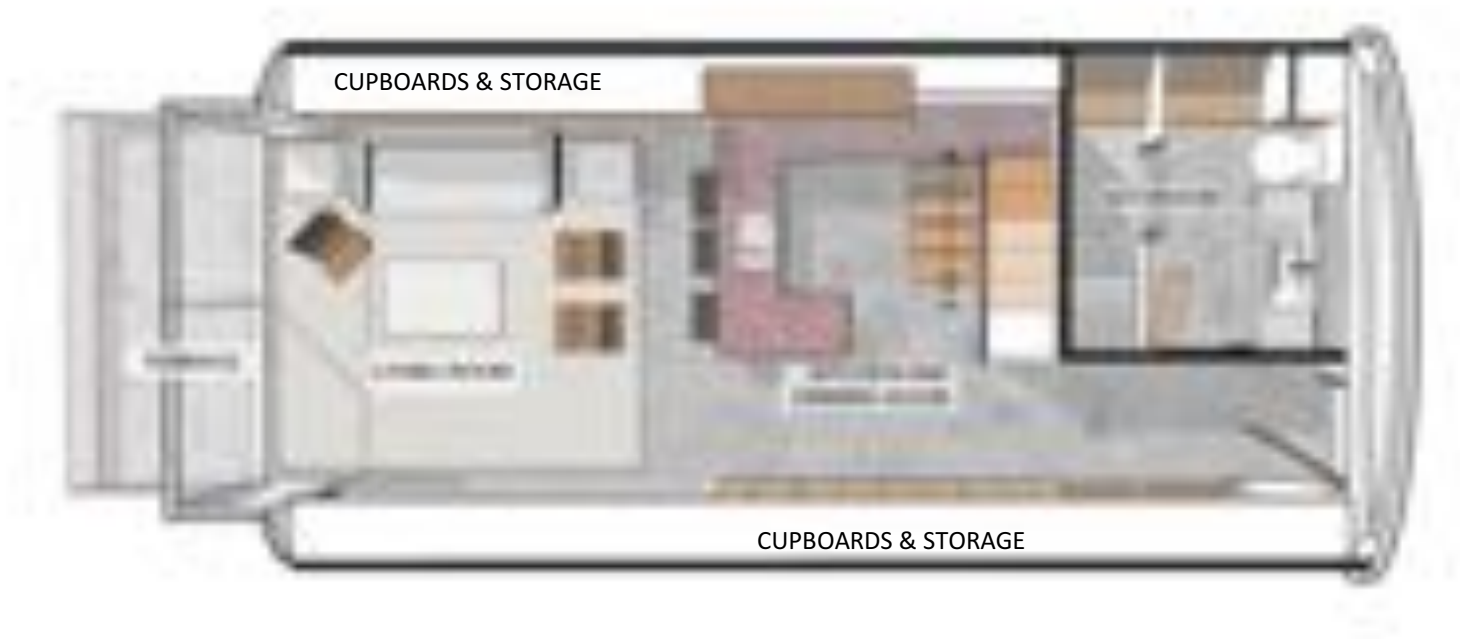




View from terrace



Ground Floor

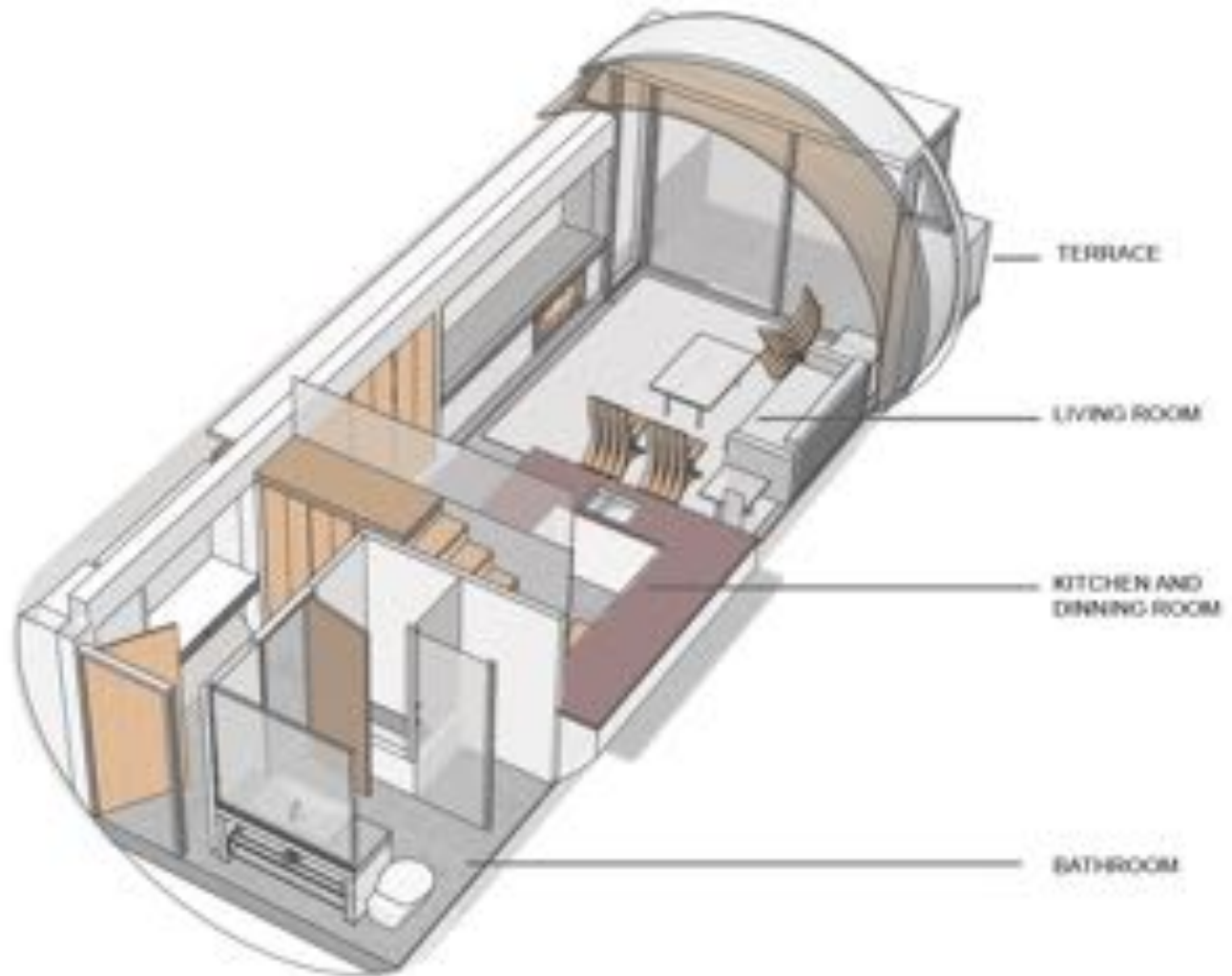


Second Floor

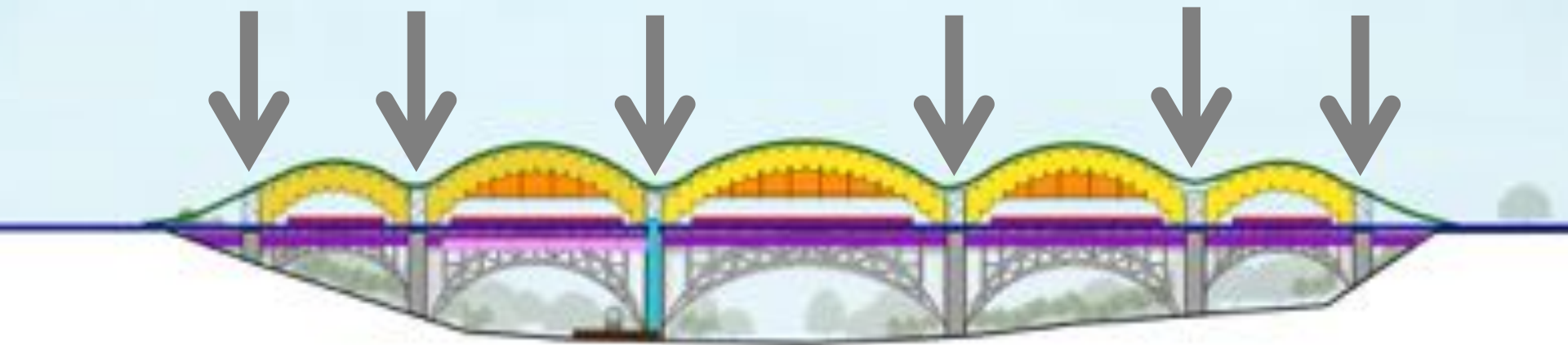




View from entrance







Components



- LINEAR PARK
- HOTEL
- HOUSING
- SOCIAL INCUBATORS AND RESTAURANTS
- MARKET STALLS, PEDESTRIAN AND BICYCLES PATH
- BLOOR STREET ROADWAY
- CIRCULATION
- SUBWAY STATION
- TRANSIT SUBWAY LINE
- GO REGIONAL TRANSIT



Linear Park



Linear Park



Linear Park



Linear Park





Hotel & Residential







Restaurants & Social Incubators



Restaurants & Social Incubators



Market Retail

Regional Transit Hub

Regional Transit Hub







**Time to reconceive
squandered spaces
as mixed-use
civic, social and
economic assets?**



Waverley Bridge, Edinburgh



Waverley Bridge, Edinburgh



Garden Bridge, London

Waterloo Bridge, London

Farrow



