

Zayed Centre for Research. Blurring the boundaries between medicine and research.



400

clinical and research staff will work together in the building.

7

'cleanrooms' where gene and cell therapy medicinal products can be made to treat children.

35%

less carbon emissions than required under the Building Regulations.

“The Zayed Centre for Research will allow us to develop cures for rare diseases quicker than ever before, giving children everywhere the chance of a longer and fuller life.”

PROFESSOR BOBBY GASPAR

PROFESSOR OF PAEDIATRICS AND IMMUNOLOGY, UCL GREAT ORMOND STREET INSTITUTE OF CHILD HEALTH

There are more than 6,000 rare diseases in the world, 75 percent of which affect children. Named in honour of the late Sheikh Zayed bin Sultan Al Nahyan of UAE, whose family's generous gift made it possible, the brand new Zayed Centre for Research into Rare Disease in Children is a building that brings knowledge, technology, and patients together in one place to accelerate the bench-to-bedside process of developing new treatments.

CHALLENGE: UNDER ONE ROOF

The project is a partnership between Great Ormond Street Hospital (GOSH), University College London, and GOSH Children's Charity. Designed to allow a highly collaborative, multi-disciplinary approach, the building brings a hospital, university research labs, and GMP manufacturing spaces together under one roof. This meant the complex systems had to meet three different design standards: NHS, laboratory, and office.

APPROACH: PEOPLE-FOCUSED ENVIRONMENT

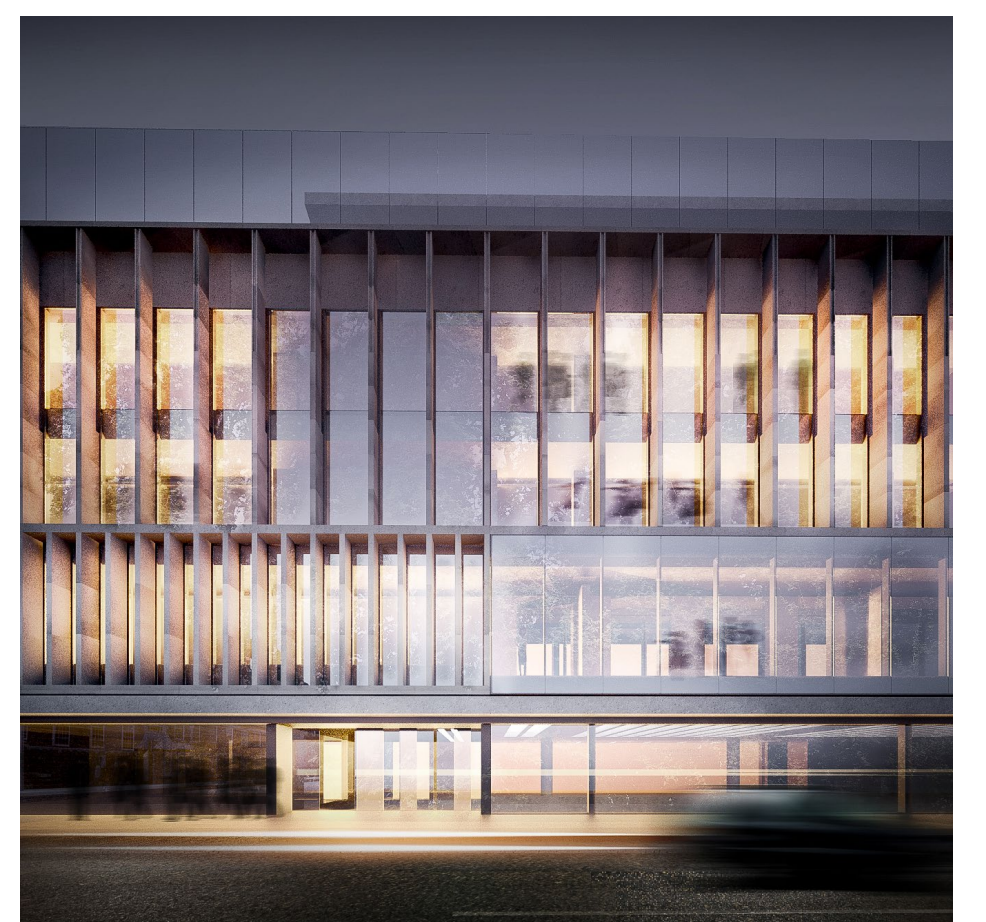
The internal environment is designed to be an enjoyable space for children but also an uplifting and inspiring working environment for clinicians and researchers. The lighting design is sympathetic to both user groups and complements the artwork in the entrance areas and central atrium. Thanks to carefully considered access-control arrangements for patients and staff, their safety and dignity in this multi-use space is ensured.

TECHNICAL IMPACT: HIGH STANDARDS

Energy efficient heating, ventilation and clever lighting solutions – along with sustainability advice and carbon modelling – meant the building achieved a 35 percent improvement over Building Regulations. This highly complex and demanding facility also has a very low running cost, and met the ambitious BREEAM Excellent rating. This sustainable focus was matched by the design team's commitment to ensuring a safe, hygienic, patient-focussed hospital alongside state-of-the-art clinical research laboratories.

HUMAN IMPACT: TRANSFORMING LIVES

An integral part of the project's success was helping to bring so many people from different buildings and backgrounds together to follow common systems and collaborate for the first time in newly open-plan offices. Ultimately, the Zayed Centre for Research will serve as a global research hub into rare diseases, benefitting children from around the world. The building itself will also be used as a reference for the design of future paediatric research facilities world-wide.



GRAHAM COSSONS, PARTNER AND HEALTHCARE SECTOR LEADER,
HOARE LEA grahamcossons@hoarelealea.com

MATTHEW TULLEY, DIRECTOR, BUILT ENVIRONMENT
GREAT ORMOND STREET HOSPITAL matthew.tulley@gosh.nhs.uk

IMAGES: STANTON WILLIAMS ARCHITECTS