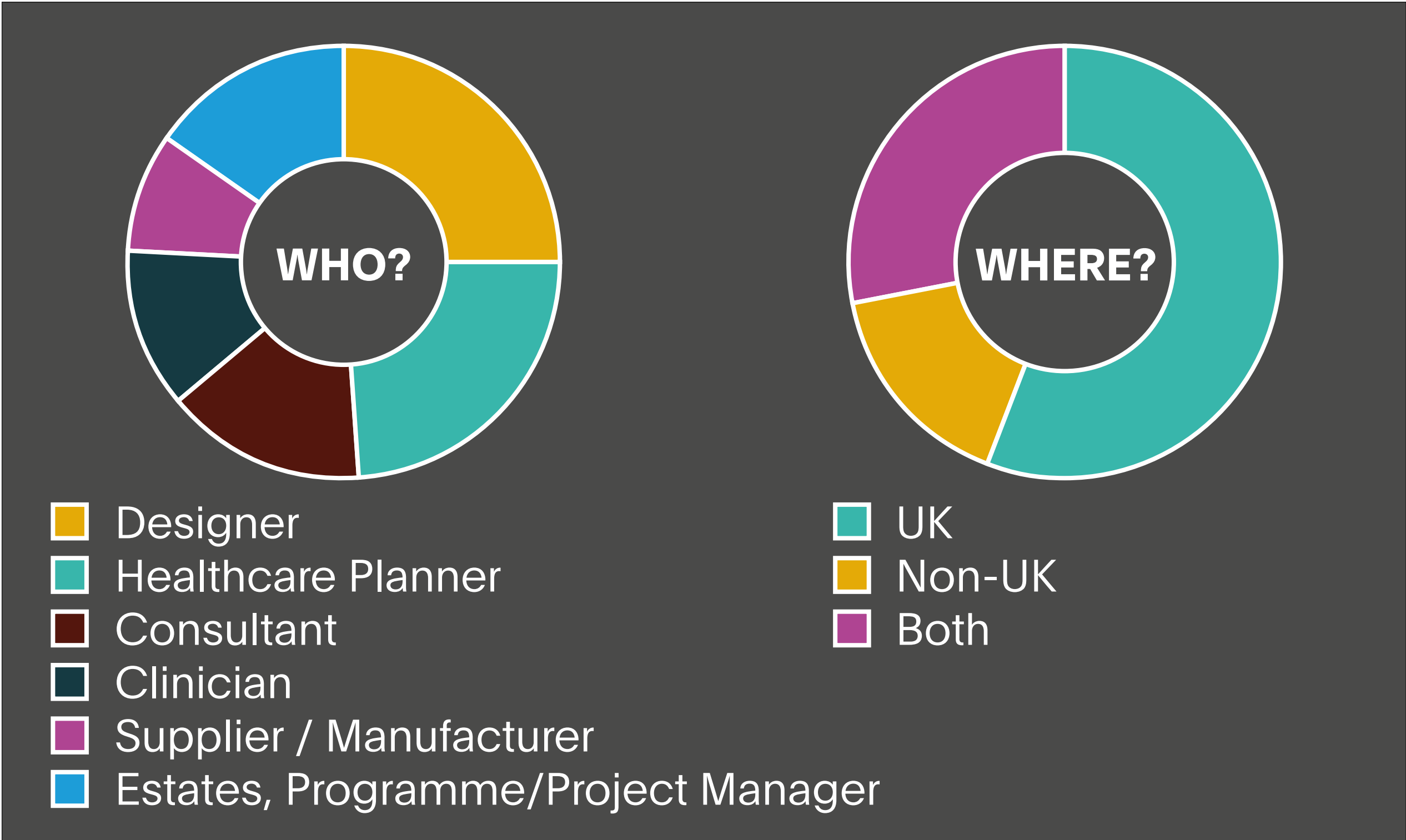


From strictly interim use to permanent, from luxury standard to low-cost mass production, modular construction has a mixed reputation in healthcare. Nevertheless, in a rapidly changing and space demanding healthcare environment, modular prefabrication is seen increasingly as an apt response to evolving demands.

ETL Healthcare Strategy + Planning and MJ Medical are in the early phases of a research project which aims to determine healthcare stakeholders' experiences and views of using prefabricated modular buildings.

This has involved the development of a survey which addresses a range of questions, including how far modular buildings can: compromise or complement **models of care**; enable the **workforce** to operate with efficiency; support the adoption of **new technology** and other **innovations**; improve **patient experience**; and respond to **change**.

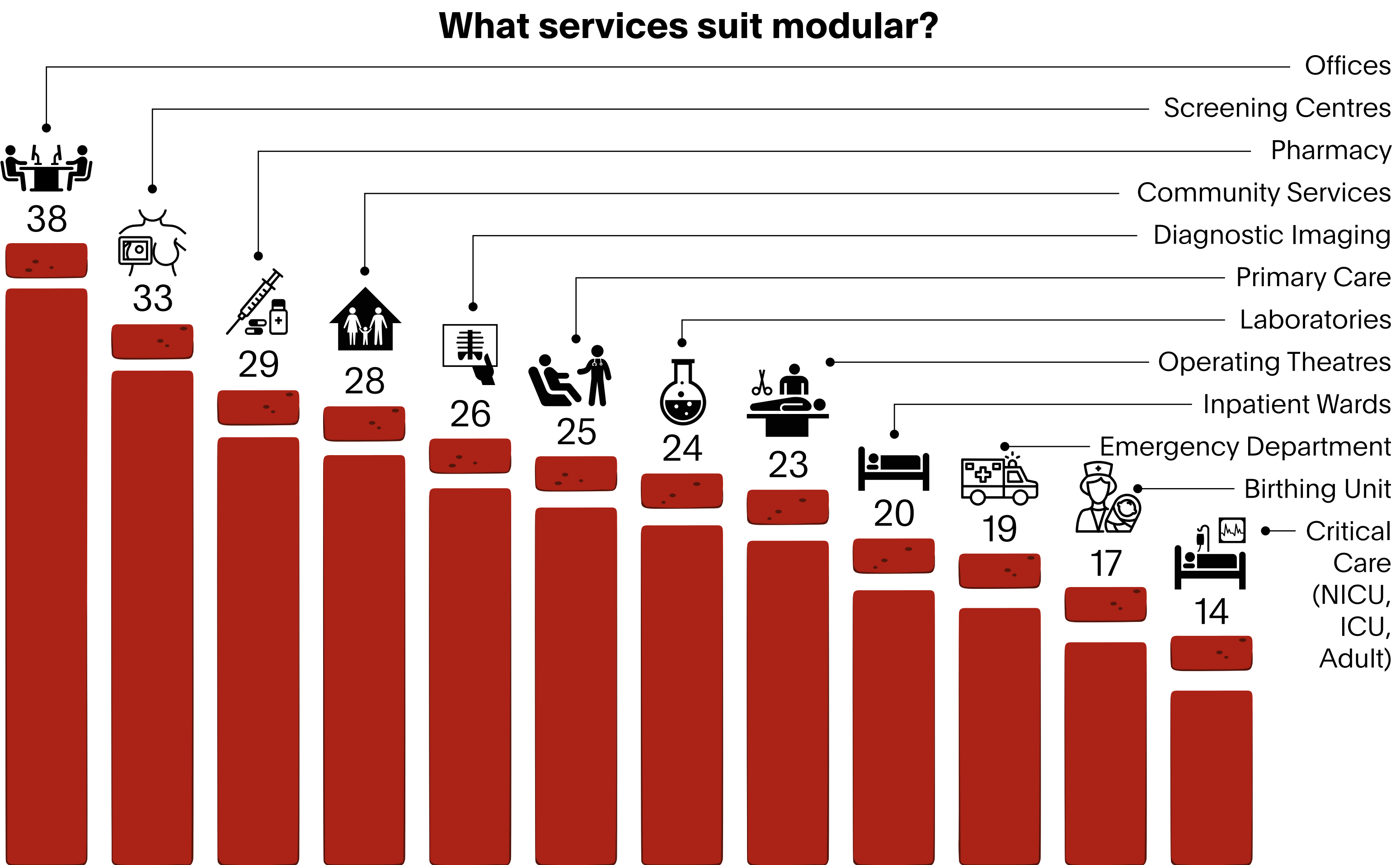
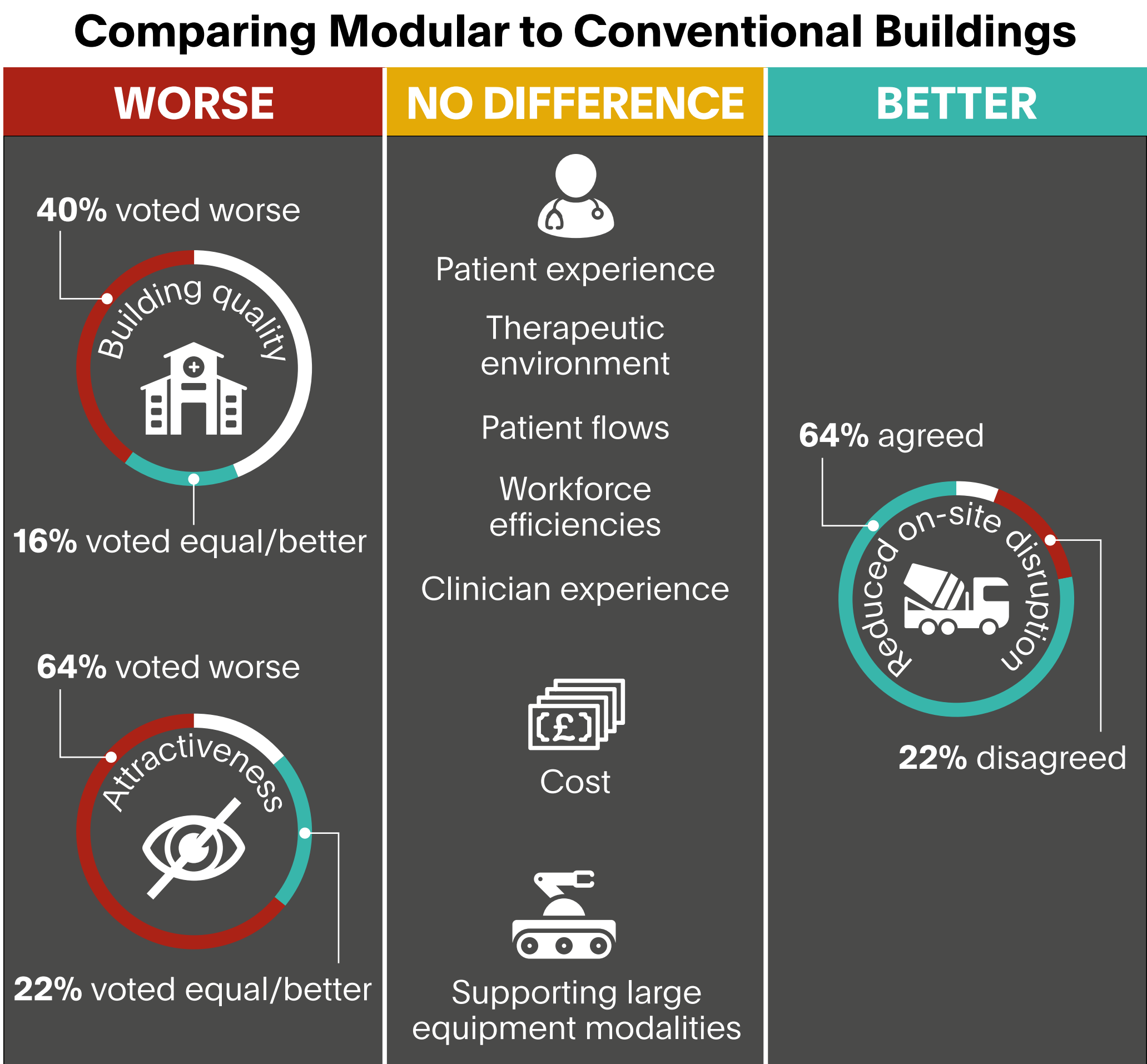
Some of the preliminary results of the survey are displayed below.



If timescale and cost constraints could be relaxed, would you still opt for a modular solution?



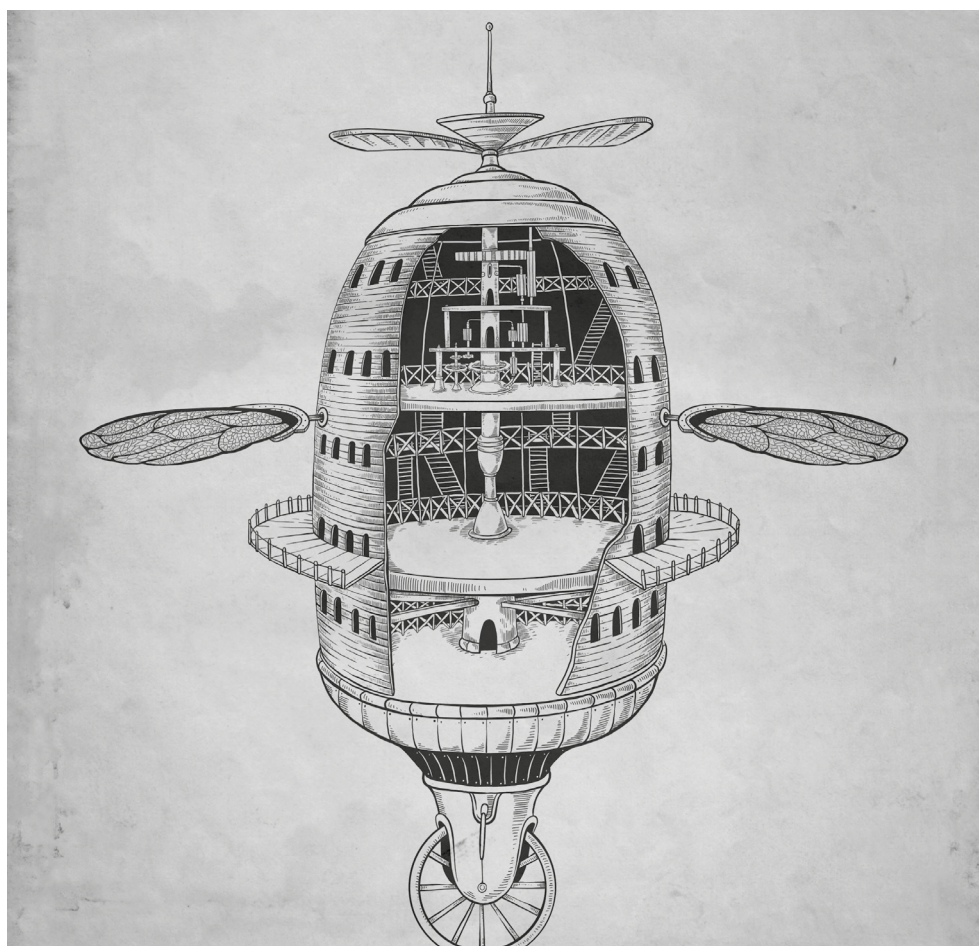
54% disagreed that modular buildings are only used for the planned time period



Past



Present



Future

John Kelly, Director, ETL Healthcare Strategy & Planning  
Kelsey Price, Healthcare planner, ETL Healthcare Strategy & Planning  
Nathaniel Hobbs, Director and Senior Consultant, MJMedical – Health Economics, [www.mjmedical.com](http://www.mjmedical.com)

[www.etl.co.uk](http://www.etl.co.uk)

We would love your views to be included in our research. To take the survey and to receive a report of the findings in the future, please scan the QR code or visit <https://tinyurl.com/y27lm4uj>.

