



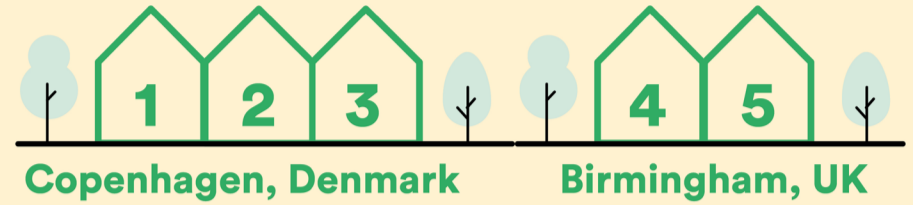
Happy Home

Learnings from the row house typology

📍 Happiness

Happy people
...live longer
...more healthy
...more productive
...more engaged
...more social
= Sustainable society

🏠 Case Studies

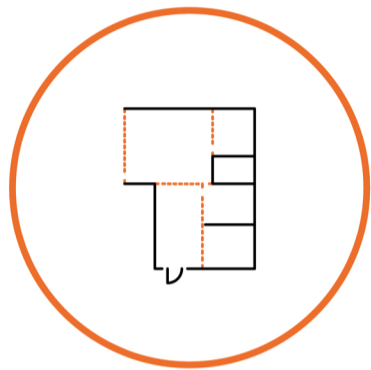


📍 5 Drivers of Happiness



1

Balancing the private & the communal



2

Personalising the physical layout



3

Sensing



4

Experiencing local identity



5

Engaging in the decision making process

📍 Recommendations

1

Creating spaces for privacy

2

Creating semi-private spaces to serve as a link between the private and the public

3

Create possibilities to belong to smaller and larger communities at the same time

4

Bring nature indoors

5

Making green spaces more accessible

6

Maintaining adaptability

7

Creating a shared identity through history, culture and lifestyle

8

Using noise to promote cohesion rather than conflict

9

Making urban facilities easily accessible

10

Balancing accessibility and safety

🔧 Toolbox



5 Drivers

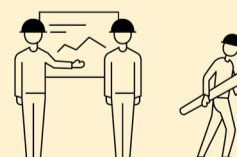


10 Recommendations

5 Drivers + 10 Recommendations can be used to inform the design process



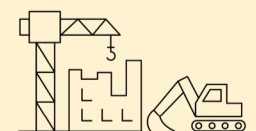
Set clear vision and goals



Feed design-decisions



Protect design-decisions



Measure social impact